








PDF CATALOG

English Version



www.vecignitions.com

CONTENTS

- TITLE PAGE..... page 1
- ABOUT US..... page 3
- PROFILE..... page 4
- PRODUCTS..... page 5
 -  CHAIN SAW..... page 5
 -  WATER PUMP..... page 7
 -  LAWN MOWER..... page 8
 -  MOTORBIKE..... page 8
 -  OUTBOARD ENGINE..... page 9
 -  POWERED TURF DIGGER..... page 10
 -  POWERED SCYTHER..... page 10
- PACKAGING..... page 63
- CONTACT..... page 64
- ORDER FORM..... page 65

ABOUT US



Manufacturing Company of Ignition Modules
VEC ignitions

The company VEC Ignitions has been founded already in 1983. We are a modern organisation with a state-of-the-art production facility specialised in the industrial production of ignition modules.

Drawing on years of experience and entirely on own resources, VEC managed to develop and implement the comprehensive range of production processes. Our production employs state-of-the-art tooling and equipment, significant shares of which were designed in-house for the specific production requirements. This approach enables VEC Ignitions to achieve a highly effective production and an outstanding flexibility to respond to special requirements with custom-made solutions. The long-standing production experience and the sound training of our staff have created a superior technology basis for developing and manufacturing exactly what the customer needs. VEC's production processes reflect the level of high precision achieved in their components. The base of sound technological know-how available has contributed significantly towards shaping and raising the competence of our unified Development and Quality Control department. This department is always up-to-date when it comes to new technologies in the field of magnetic ignition components and it is ready to face the challenges of the global market. All this adds up to state-of-the-art products that meet all requirements. VEC's internal system of functional and quality control warrants a superior quality of VEC ignition components. The competent staff at the VEC Sales Department invite you to try them and approach them anytime no matter how complex your requirement seem to be.

Their solid know-how enables our sales staff to help you even with very specific questions to achieve the best possible solution.

This web site contains all relevant technical specifications for the full product range available from VEC Ignitions. The following pages provide a product survey to assist manufacturers of small gasoline powered engines, authorised dealers and service centres as well as for engineers designing new products in finding the right component for their purposes.

PROFILE

This catalog contains electronic components from the product range of VEC Ignitions. Magnetos are sources of electric energy in chain saws, lawn mowers, pumps, motorbikes, agricultural equipment, outboard engines and various other small combustion engines. The energy generated by magnetos is used to ignite the air-air-fuel mixtures and provide power for lighting.

There are two distinct types of magnetos: the ones using contacts and the contact-free ones. The magnetos with contacts consist of a flywheel with a magnet, a contact-breaker and an ignition coil. Contact-free magnetos either use flywheels with a magnet and an electronic ignition module, or they are made up of a flywheel with a magnet, an electronic ignition module, and an additional ignition coil.

An electronic ignition module contains the ignition electronics and the ignition coil. The module generates the spark that ignites the air-fuel mixture.

The electronic ignition module with ignition coil performs the same function.

Electronic ignition modules with ignition electronics package belong in the same category of contact-free magnetos like transistor/ thyristor ignition modules.

Contact-free magnetos have specific advantages over contact-type magnetos.

- 1) They have no mechanical wear (see contact-breaker)
- 2) They function properly unaffected in a soiled or moist unaffected
- 3) They generate higher energy sparks in the spark plug
- 4) Fuel consumption is reduced
- 5) Pre-ignition maintains a constant angle
- 6) Ignition remains reliable under adverse conditions
- 7) Exhaust emission is reduced
- 8) Robust design makes for reliable function

The ignition coil is designed to generate and feed a high voltage to the spark plug to enable to ignite. VEC assembles its products from top-quality components only. Based on their quality-optimised production, VEC Ignitions can confidently guarantee long-lasting and reliable function of their products. This website provides a survey of the most common electronic ignition modules, ignition coils and ignition electronic components. Other magnetos can readily be manufactured according to customer specifications.








CHAIN SAW

TYPE SV-25		Replace for Stihl 009, 010, 011, 012, 020, 021, 023, 025, MS 200, 210, 230, 240, and 250	Page 11
TYPE SV-17		Replace for Stihl 017	Page 13
TYPE SV-34		Replace for Stihl 026, 028, 029, 034, 036, 038, 039, 044, 048, MS 260, 290, 310, 390, 340, 360, 360 C, 440, FS 360 and FS 420	Page 15
TYPE SV-64		Replace for Stihl 064 and MS 640	Page 17
TYPE UV-1		Replace for Stihl 050, 051, 075, 076, and 084	Page 19
TYPE TV-2E		Replace for Tomos, DMB, IMT, Stihl 070 With Iskra-Bosch	Page 21
TYPE DV-110		Replace for Dolmar 109, 110, 111, 51, 115	Page 23
TYPE DV-112		Replace for Dolmar 120 SI, 6000I, 112, 113, 116	Page 25
TYPE AV-438		Replace for Alpina 330, 380, P34S, 432, 438	Page 27
TYPE AV-45		Replace for Alpina 40, 41, 45	Page 29

TYPE AV-70		Replace for Alpina 70	Page 31
TYPE PV-1		Replace for Partner R420T, R421T, P55, P70, MP65	Page 33
TYPE HV-1E		Replace for Husqvarna 33, 61, 66old, 266	Page 35
TYPE HV-2		Replace for Husqvarna 48, 50,51,61 New, 240R, 245R, 250PS, 250R, 252RX, 254, 257, 261, 262, 268, 268K, 272, 272K	Page 37
TYPE HV-3E		Replace for Husqvarna 36R, 42, 181, 234, 238, 268R, 242, 246, 281, 288	Page 39
TYPE OV-1		Replace for Opem 145, 150	Page 49
TYPE OV-2		Replace for Opem 152, 157, 165	Page 51
TYPE SV-647		Replace for Solo 647, 657	Page 59



WATER PUMP

TYPE TV-2E		Replace for Tomos, DMB, IMT, Stihl 070 With Iskra-Bosch	Page 21
TYPE TV-1		Replace for Tomos UMO-4	Page 41
TYPE ATV-1		Replace for Tecumseh/Tecnamotor TVS90, H30, AH600, HSK600, AV520, H35, H40, HSK70, HSK600, HSK850, HSSK50, LEV100, LEV115, and VXL840	Page 57
TYPE DMV-100		Replace for DMB SP-250 / 2.5 SLAP-500	Page 61
TYPE IV-300		Replace for Intermotor IM300, IM350, IM359, AKME A349, A360	Page 55



LAWN MOWER

TYPE TV-2E



Replace for Tomos, DMB, IMT, Stihl 070
With Iskra-Bosch

Page 21

TYPE ATV-1



Replace for Tecumseh/Tecnamotor
TVS90, H30, AH600, HSK600, AV520,
H35, H40, HSK70, HSK600, HSK850,
HSSK50, LEV100, LEV115, and VXL840

Page 57

TYPE DMV-100



Replace for DMB SP-250 / 2.5
SLAP-500

Page 61

TYPE IV-300



Replace for Intermotor IM300, IM350,
IM359, AKME A349, A360

Page 55



MOTORBIKE

TYPE TV-2E



Replace for Tomos, DMB, IMT, Stihl 070
With Iskra-Bosch

Page 21

TYPE TV-3



Replace for Tomos, motorbike and
outbord engine

Page 43

TYPE TV-4



Replace for Tomos T4, T4.5, T4.8, BT

Page 45



OUTBOARD ENGINE

TYPE TV-2E



Replace for Tomos, DMB, IMT, Stihl 070
With Iskra-Bosch

Page 21

TYPE TV-3



Replace for Tomos, motorbike and
outbord engine

Page 43

TYPE TV-4



Replace for Tomos T4, T4.5, T4.8, BT

Page 45

TYPE TV-5



Replace for Tomos T10, T18

Page 47




POWERED TURF DIGGER

TYPE TV-2E		Replace for Tomos, DMB, IMT, Stihl 070 With Iskra-Bosch	Page 21
TYPE MV-1		Replace for Lombardini/DMB LA 300	Page 53
TYPE ATV-1		Replace for Tecumseh/Tecnamotor TVS90, H30, AH600, HSK600, AV520, H35, H40, HSK70, HSK600, HSK850, HSSK50, LEV100, LEV115, and VXL840	Page 57
TYPE DMV-100		Replace for DMB SP-250 / 2.5 SLAP-500	Page 61
TYPE IV-300		Replace for Intermotor IM300, IM350, IM359, AKME A349, A360	Page 55



POWERED SCYTHE

TYPE SV-34		Replace for Stihl 026, 028, 029, 034, 036, 038, 039, 044, 048, MS 260, 290, 310, 390, 340, 360, 360 C , 440 ,FS 360 and FS 420	Page 15
------------	---	---	---------



TECHNICAL DATA

- * Secondary coil voltage more than 17 kV
- * Very rapid build-up of secondary voltage
- * Start-up revolution speed 500 rpm
- * Maximum revolution speed 15,000 rpm
- * Operational temperature range between -20°C and +60°C
- * Storage temperature range between -40°C and +100°C



TYPE SV-25

chain saw



GENERAL INFORMATION



The SV-25 electronic ignition module is designed to achieve contact-free ignition of air-fuel mixtures. This type of ignition module utilises transistor

switches for magnet activation. The modules are fabricated to high standards at VEC's own modern production facility. VEC uses only high-quality components from globally established suppliers. It all adds up to a long lifetime and reliable operation.

The SV-25 module matches the original ignition module type 0000 400 1306 supplied by STIHL. SV-25 is specified for installation in these models manufactured by STIHL:

009, 010, 011, 012, 020, 021, 023, 025, MS 200, MS 210, MS 230, MS 240 and MS 250

WARRANTY

All products supplied by VEC Ignitions are covered by a five-year warranty. This warranty does not cover damages resulting from improper installation and damages caused by mechanical actions.

ORDERING



When ordering an ignition module or component, make sure to specify the correct model designation, in this case SV-25. Please let us know if you intend to operate the modules under extreme temperature conditions. We have special solutions for these cases.

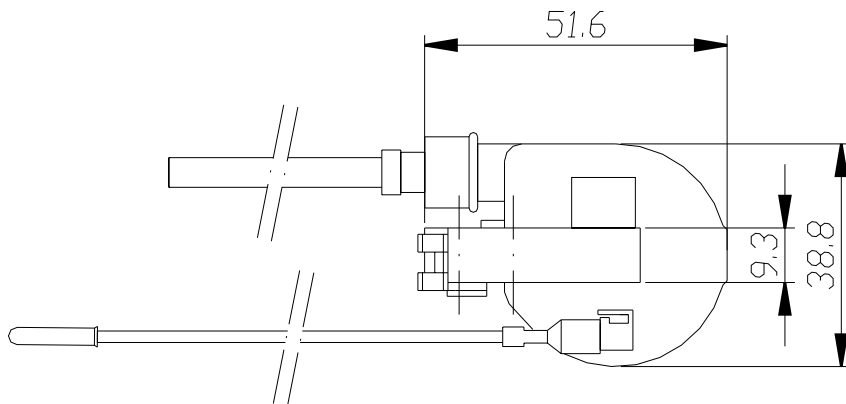
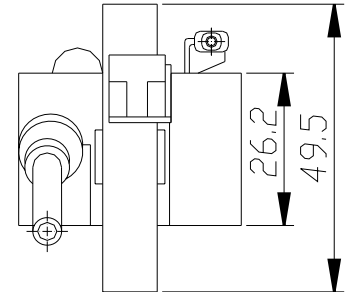
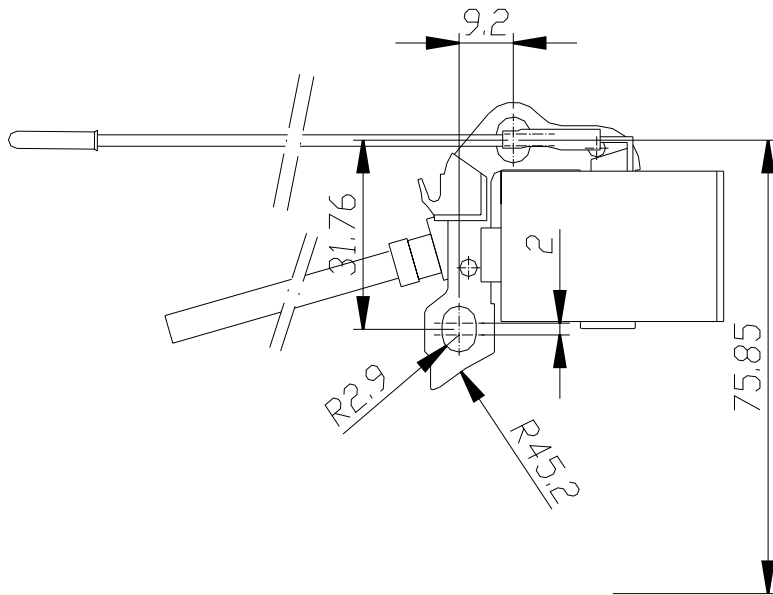
PACKAGING



Refer to the package specification page at the end of this catalogue. The electronic ignition module comes in a blister package (see sketch S1) along with a high voltage cable and an ignition breaker cable. Larger quantities of the SV-25 module come in appropriately sized cartons (see sketches S2, S3, and S4).



TECHNICAL DRAWING TYPE SV-25





TECHNICAL DATA

- * Secondary coil voltage more than 17 kV
- * Very rapid build-up of secondary voltage
- * Start-up revolution speed 500 rpm
- * Maximum revolution speed 15,000 rpm
- * Operational temperature range between -20°C and +60°C
- * Storage temperature range between -40°C and +100°C

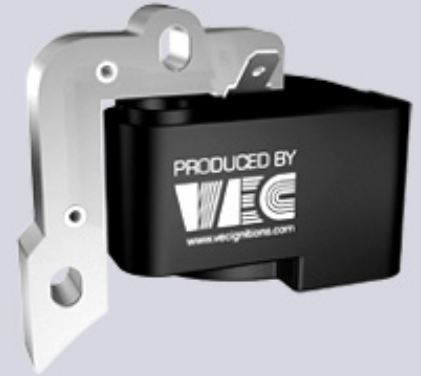


TYPE SV-17

chain saw



TECHNICAL DRAWING



GENERAL INFORMATION



The SV-17 electronic ignition module is designed to achieve contact-free ignition of air-fuel mixtures. This type of ignition module utilises transistor

switches for magnet activation. The modules are fabricated to high standards at VEC's own modern production facility. VEC uses only high-quality components from globally established suppliers. It all adds up to a long lifetime and reliable operation.

The SV-17 module matches the original ignition module type 1130 400 1300 supplied by STIHL. SV-17 is specified for installation in STIHL Chain saw model O17.

WARRANTY

All products supplied by VEC Ignitions are covered by a five-year warranty. This warranty does not cover damages resulting from improper installation and damages caused by mechanical actions.

ORDERING



When ordering an ignition module or component, make sure to specify the correct model designation, in this case SV-17. Please let us know if you intend

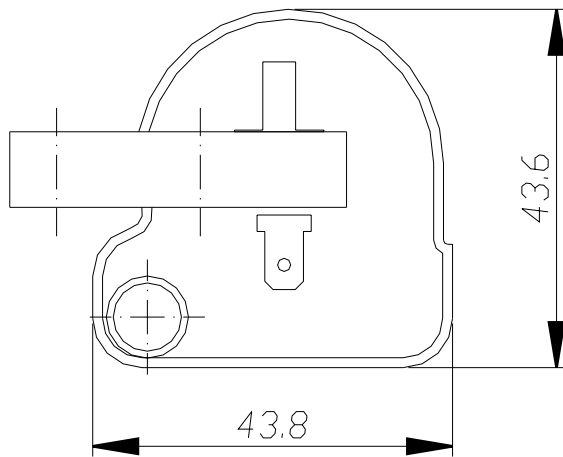
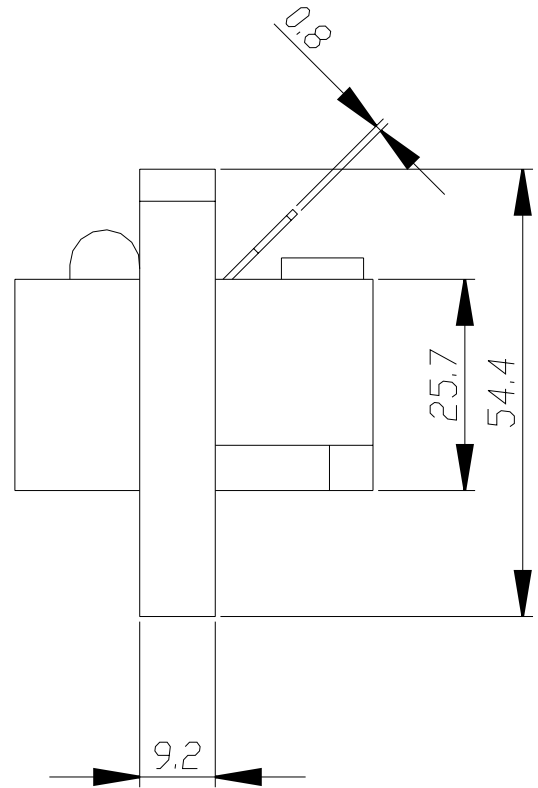
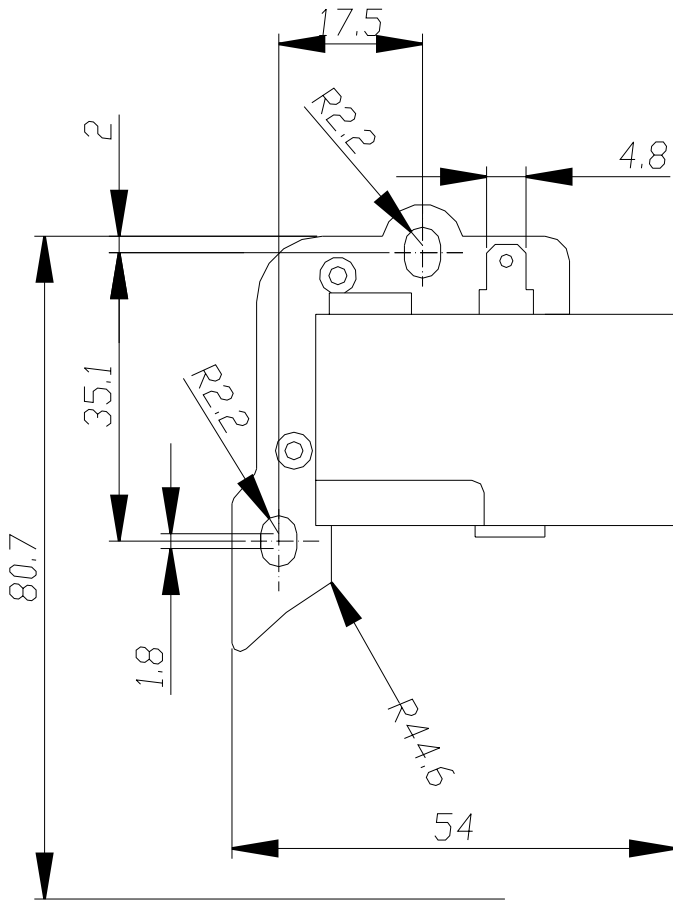
to operate the modules under extreme temperature conditions. We have special solutions for these cases.

PACKAGING



Refer to the package specification page at the end of this catalogue. The electronic ignition module comes in a blister package (see sketch S1) along with a high voltage cable and an ignition breaker cable. Larger quantities of the SV-17 module come in appropriately sized cartons (see sketches S2, S3, and S4).

TECHNICAL DRAWING
TYPE SV-17





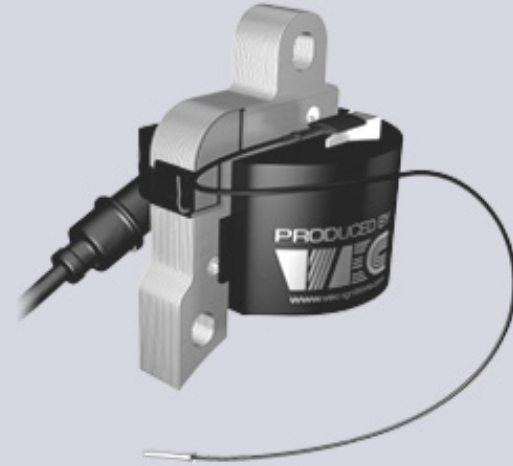
TECHNICAL DATA

- * Secondary coil voltage more than 15 kV
- * Very rapid build-up of secondary voltage
- * Start-up revolution speed 750 rpm
- * Maximum revolution speed 15,000 rpm
- * Operational temperature range between -20°C and +60°C
- * Storage temperature range between -40°C and +100°C



TYPE SV-34

chain saw
powered scythe



GENERAL INFORMATION



The SV-34 electronic ignition module is designed to achieve contact-free ignition of air-fuel mixtures. This type of ignition module utilises transistor

switches for magnet activation. The modules are fabricated to high standards at VEC's own modern production facility. VEC uses only high-quality components from globally established suppliers. It all adds up to a long lifetime and reliable operation.

The SV-34 module matches the original ignition module type 0000 400 1300 supplied by STIHL. SV-34 is specified for installation in these models manufactured by STIHL:

Chain saws: 026, 028, 029, 034, 036, 038, 039, 044, 048, MS 260, 290, 310, 390, 340, 360, 360 C, 440

Powered scythes: FS 360 and FS 420

WARRANTY

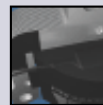
All products supplied by VEC Ignitions are covered by a five-year warranty. This warranty does not cover damages resulting from improper installation and damages caused by mechanical actions.

ORDERING



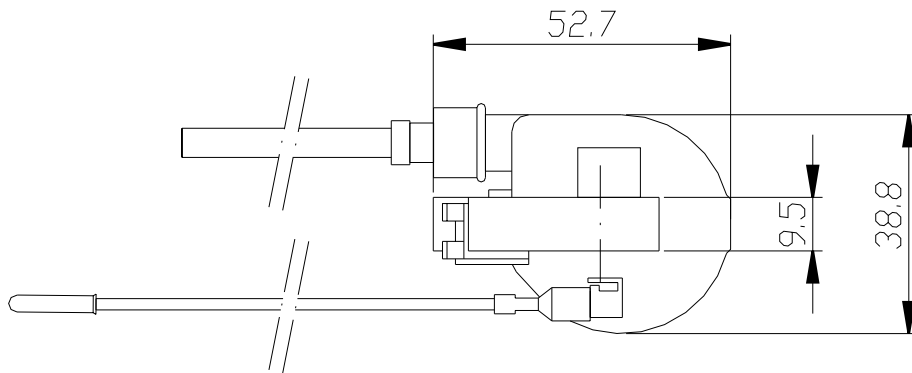
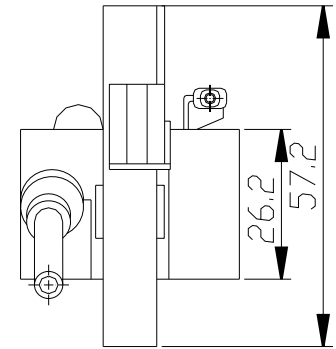
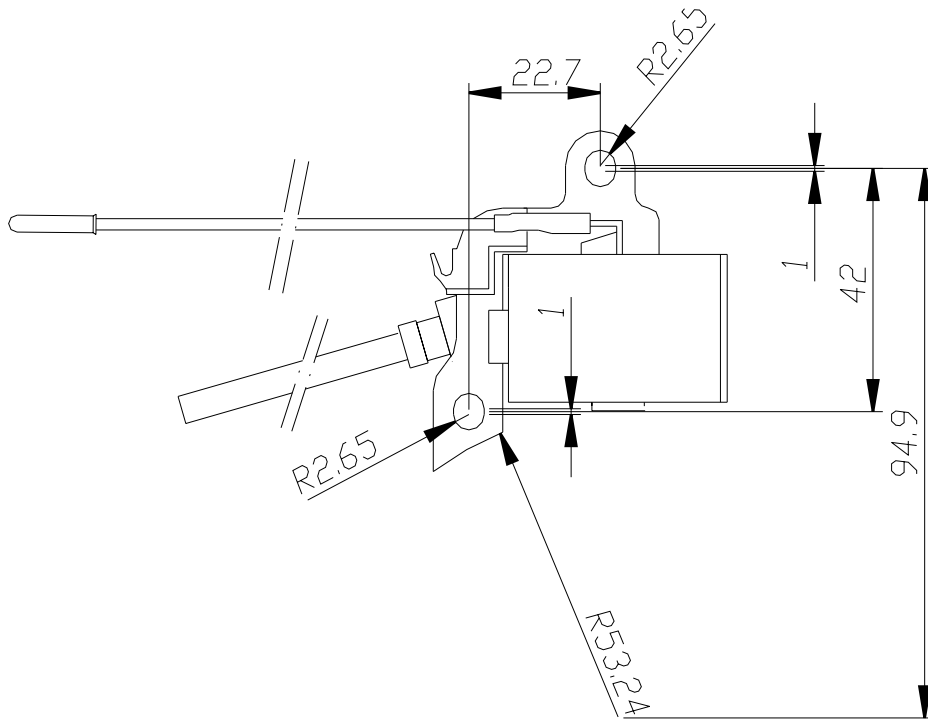
When ordering an ignition module or component, make sure to specify the correct model designation, in this case SV-34. Please let us know if you intend to operate the modules under extreme temperature conditions. We have special solutions for these cases.

PACKAGING



Refer to the package specification page at the end of this catalogue. The electronic ignition module comes in a blister package (see sketch S1) along with a high voltage cable and an ignition breaker cable. Larger quantities of the SV-34 module come in appropriately sized cartons (see sketches S2, S3, and S4).

TECHNICAL DRAWING
TYPE SV-34



TECHNICAL DATA

- * Secondary coil voltage more than 15 kV
- * Very rapid build-up of secondary voltage
- * Start-up revolution speed 650 rpm
- * Maximum revolution speed 15,000 rpm
- * Operational temperature range between -20°C and +60°C
- * Storage temperature range between -40°C and +100°C



TYPE SV-64

chain saw



TECHNICAL DRAWING



GENERAL INFORMATION



The SV-64 electronic ignition module is designed to achieve contact-free ignition of air-fuel mixtures. This type of ignition module utilises transistor

switches for magnet activation. The modules are fabricated to high standards at VEC's own modern production facility. VEC uses only high-quality components from globally established suppliers. It all adds up to a long lifetime and reliable operation.

The SV-64 module matches the original ignition module type 0000 400 1300 supplied by STIHL. SV-64 module is specified for installation into the STIHL chain saw model 064 and MS 640.

WARRANTY

All products supplied by VEC Ignitions are covered by a five-year warranty. This warranty does not cover damages resulting from improper installation and damages caused by mechanical actions.

ORDERING



When ordering an ignition module or component, make sure to specify the correct model designation, in this case SV-64. Please let us know if you intend to operate the modules under extreme temperature conditions. We have special solutions for these cases.

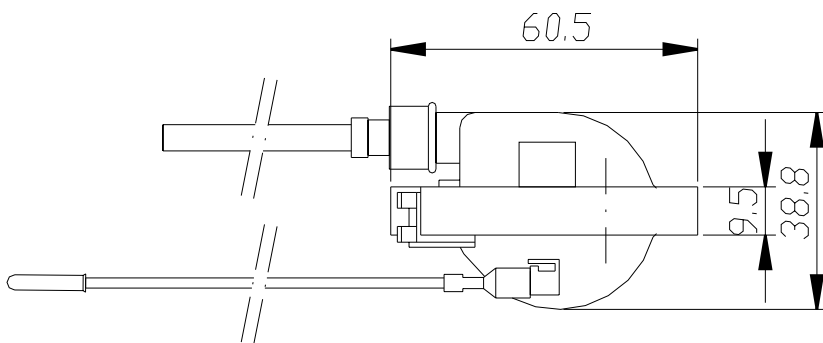
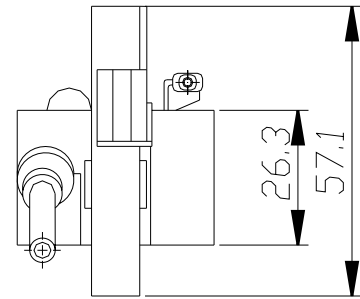
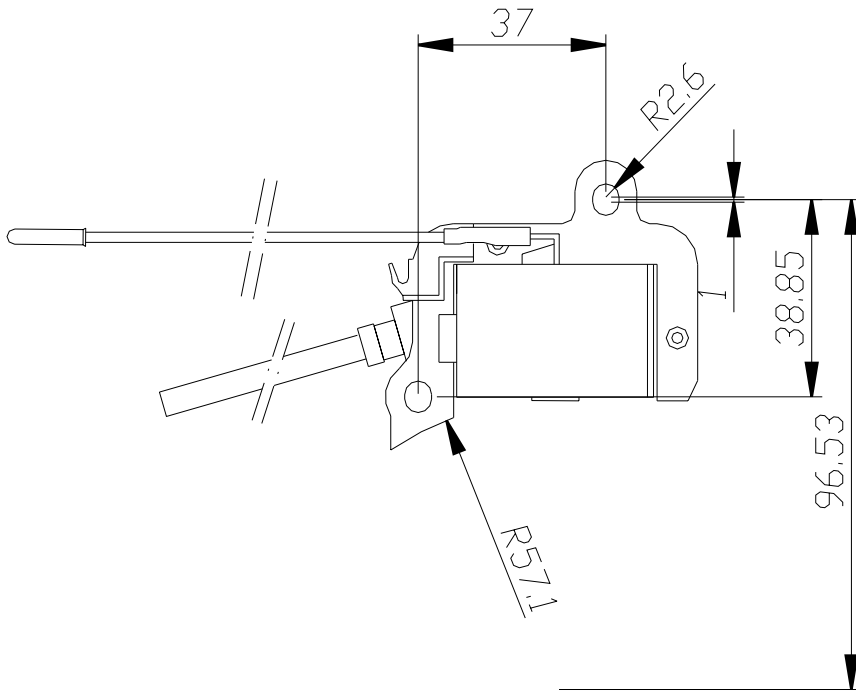
PACKAGING



Refer to the package specification page at the end of this catalogue. The electronic ignition module comes in a blister package (see sketch S1) along with a high voltage cable and an ignition breaker cable. Larger quantities of the SV-64 module come in appropriately sized cartons (see sketches S2, S3, and S4).



TECHNICAL DRAWING
TYPE SV-64



TECHNICAL DATA

In connection with the matching ignition coil the following specifications apply:

- * Secondary coil voltage more than 15 kV
- * Very rapid build-up of secondary voltage
- * Very low revolution speed at start-up
- * Maximum revolution speed 15,000 rpm
- * Operational temperature range between -20°C and +60°C
- * Storage temperature range between -40°C and +100°C



TYPE UV-1

chain saw



GENERAL INFORMATION

ORDERING



The UV-1 electronic ignition component is connected with the ignition coil to achieve fuel ignition. This type of ignition module utilises transistor

switches for magnet activation. The modules are fabricated to high standards at VEC's own modern production facility. VEC uses only high-quality components from globally established suppliers. It all adds up to a long lifetime and reliable operation.



When ordering an ignition module or component, make sure to specify the correct model designation, in this case UV-1. Please let us know if you intend to operate the modules under extreme temperature conditions. We have special solutions for these cases.

The UV-1 module matches the original ignition module type 1118 400 1001 supplied by STIHL. UV-1 module is specified for installation in these chain saws models manufactured by STIHL:

O28, O38, O48, O51, O76, and O84.



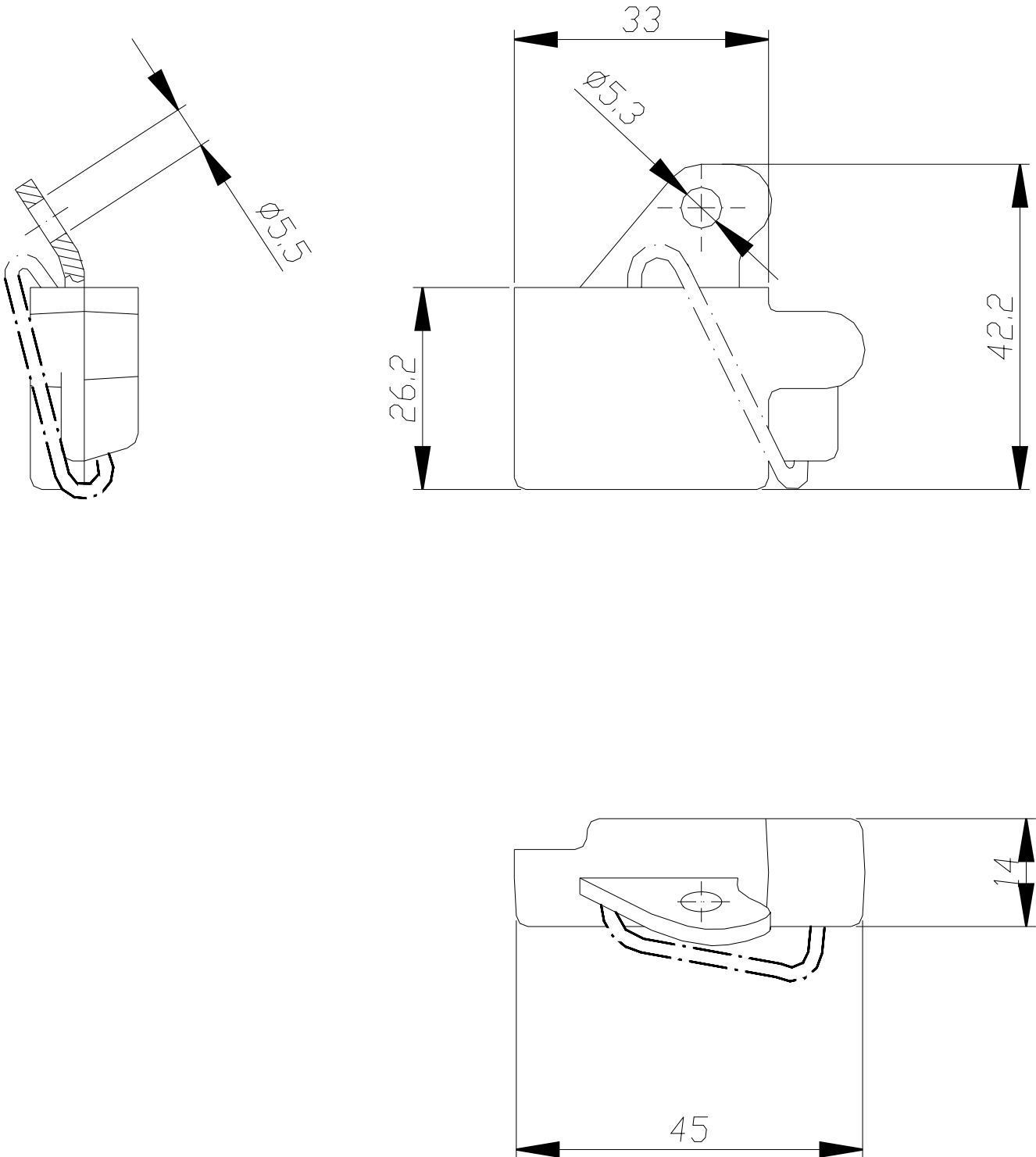
Electronic ignition component UV-1 is shipped in a special package with the connecting cable included.

PACKAGING

WARRANTY

All products supplied by VEC Ignitions are covered by a five-year warranty. This warranty does not cover damages resulting from improper installation and damages caused by mechanical actions.

TECHNICAL DRAWING
TYPE UV-1



TECHNICAL DATA

- * Secondary coil voltage more than 17 kV
- * Very rapid build-up of secondary voltage
- * Start-up revolution speed 400 rpm
- * Maximum revolution speed 10,000 rpm
- * Operational temperature range between -20°C and +60°C
- * Storage temperature range between -40°C and +100°C



TYPE TV-2E

chain saw
 motorbike
 lawn mower
 water pump
 powered turf digger
 outboard engine



TECHNICAL
 DRAWING



GENERAL INFORMATION



The TV-2E electronic ignition component is designed to convert a contact-type magneto into a contact-free type. It is installed inside a contact-

type magneto in place of the inner ignition coil land replaces the original coil complete with the breaker contacts and the capacitor.

The modules are fabricated to high standards at VEC's own modern production facility. VEC uses only high-quality components from globally established suppliers. It all adds up to a long lifetime and reliable operation.

The TV-2E module is suited for installation in all makes and models of motorbikes, chain saws, powered turf diggers, lawn mowers, outboard engines, and water pumps which are originally equipped with a BOSCH contact-type magneto like, for example, the STIHL 070. It matches the original ignition module types 1106 404 3210, 1106 404 3401 and 1106 400 2001 supplied by STIHL.

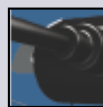


When ordering an ignition module or component, make sure to specify the correct model designation, in this case TV-2E. Please let us know if you intend

to operate the modules under extreme temperature conditions. We have special solutions for these cases.

ORDERING

PACKAGING

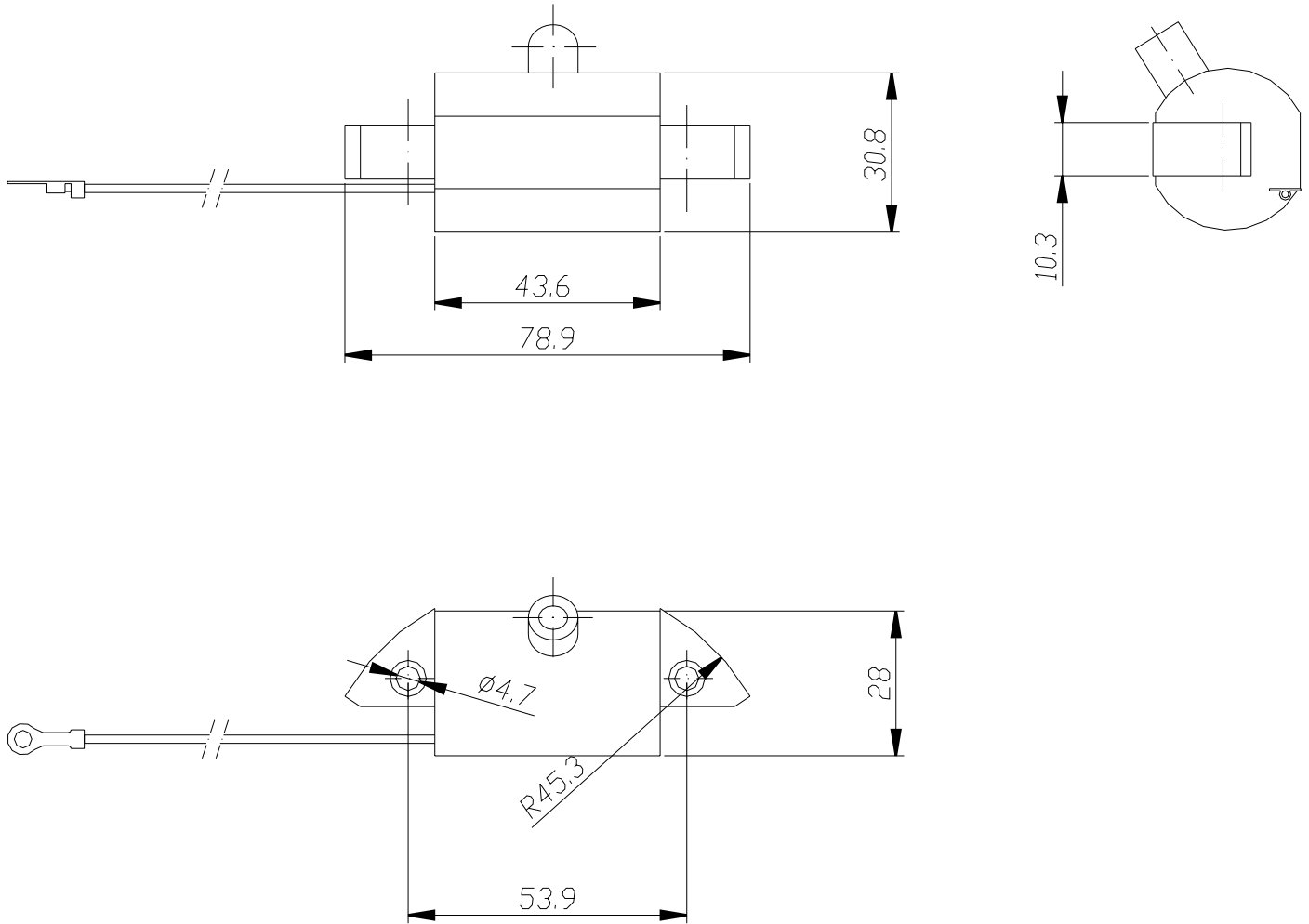


Refer to the package specification page at the end of this catalogue. The electronic ignition module comes in a blister package (see sketch S1) along with a high voltage cable and an ignition breaker cable. Larger quantities of the TV-2E module come in appropriately sized cartons (see sketches S2, S3, and S4).

WARRANTY

All products supplied by VEC Ignitions are covered by a five-year warranty. This warranty does not cover damages resulting from improper installation and damages caused by mechanical actions.

TECHNICAL DRAWING
TYPE TV-2E



TECHNICAL DATA

- * Secondary coil voltage more than 15 kV
- * Very rapid build-up of secondary voltage
- * Start-up revolution speed 800 rpm
- * Maximum revolution speed 15,000 rpm
- * Operational temperature range between -20°C and +60°C
- * Storage temperature range between -40°C and +100°C



TYPE DV-110

chain saw



GENERAL INFORMATION



The DV-110 electronic ignition module is designed to achieve contact-free ignition of air-fuel mixtures. This type of ignition module utilises transistor

switches for magnet activation. The modules are fabricated to high standards at VEC's own modern production facility. VEC uses only high-quality components from globally established suppliers. It all adds up to a long lifetime and reliable operation.

The DV-110 module matches the original ignition module type 020 1432 010 supplied by DOLMAR. DV-110 is specified for installation in these chain saw models manufactured by SACHS-DOLMAR: 109, 110, 111, 51, 115

WARRANTY

All products supplied by VEC Ignitions are covered by a five-year warranty. This warranty does not cover damages resulting from improper installation and damages caused by mechanical actions.

ORDERING



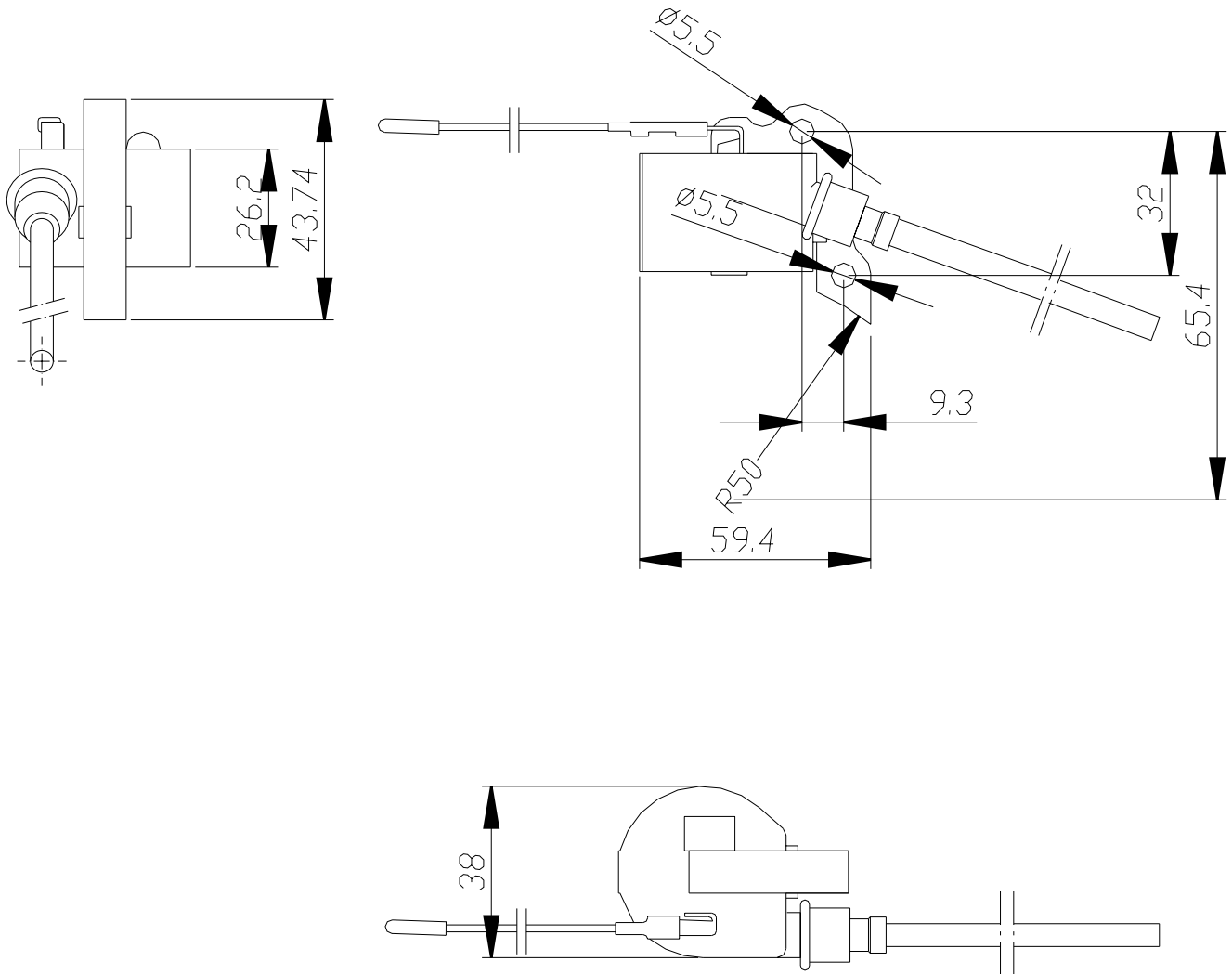
When ordering an ignition module or component, make sure to specify the correct model designation, in this case DV-110. Please let us know if you intend to operate the modules under extreme temperature conditions. We have special solutions for these cases.

PACKAGING



Refer to the package specification page at the end of this catalogue. The electronic ignition module comes in a blister package (see sketch S1) along with a high voltage cable and an ignition breaker cable. Larger quantities of the DV-110 module come in appropriately sized cartons (see sketches S2, S3, and S4).

TECHNICAL DRAWING
TYPE DV-110





TECHNICAL DATA

- * Secondary coil voltage more than 15 kV
- * Very rapid build-up of secondary voltage
- * Start-up revolution speed 800 rpm
- * Maximum revolution speed 15,000 rpm
- * Operational temperature range between -20°C and +60°C
- * Storage temperature range between -40°C and +100°C



TYPE DV-112

chain saw



TECHNICAL DRAWING



GENERAL INFORMATION



The DV-112 electronic ignition module is designed to achieve contact-free ignition of air-fuel mixtures. This type of ignition module utilises

transistor switches for magnet activation. The modules are fabricated to high standards at VEC's own modern production facility. VEC uses only high-quality components from globally established suppliers. It all adds up to a long lifetime and reliable operation.

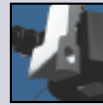
The DV-112 module matches the original ignition module type 030 143 040 supplied by DOLMAR. DV-112 is specified for installation in these chain saw models manufactured by SACHS-DOLMAR:

112, 113, 116, 6000i, 6800i and 120si

WARRANTY

All products supplied by VEC Ignitions are covered by a five-year warranty. This warranty does not cover damages resulting from improper installation and damages caused by mechanical actions.

ORDERING



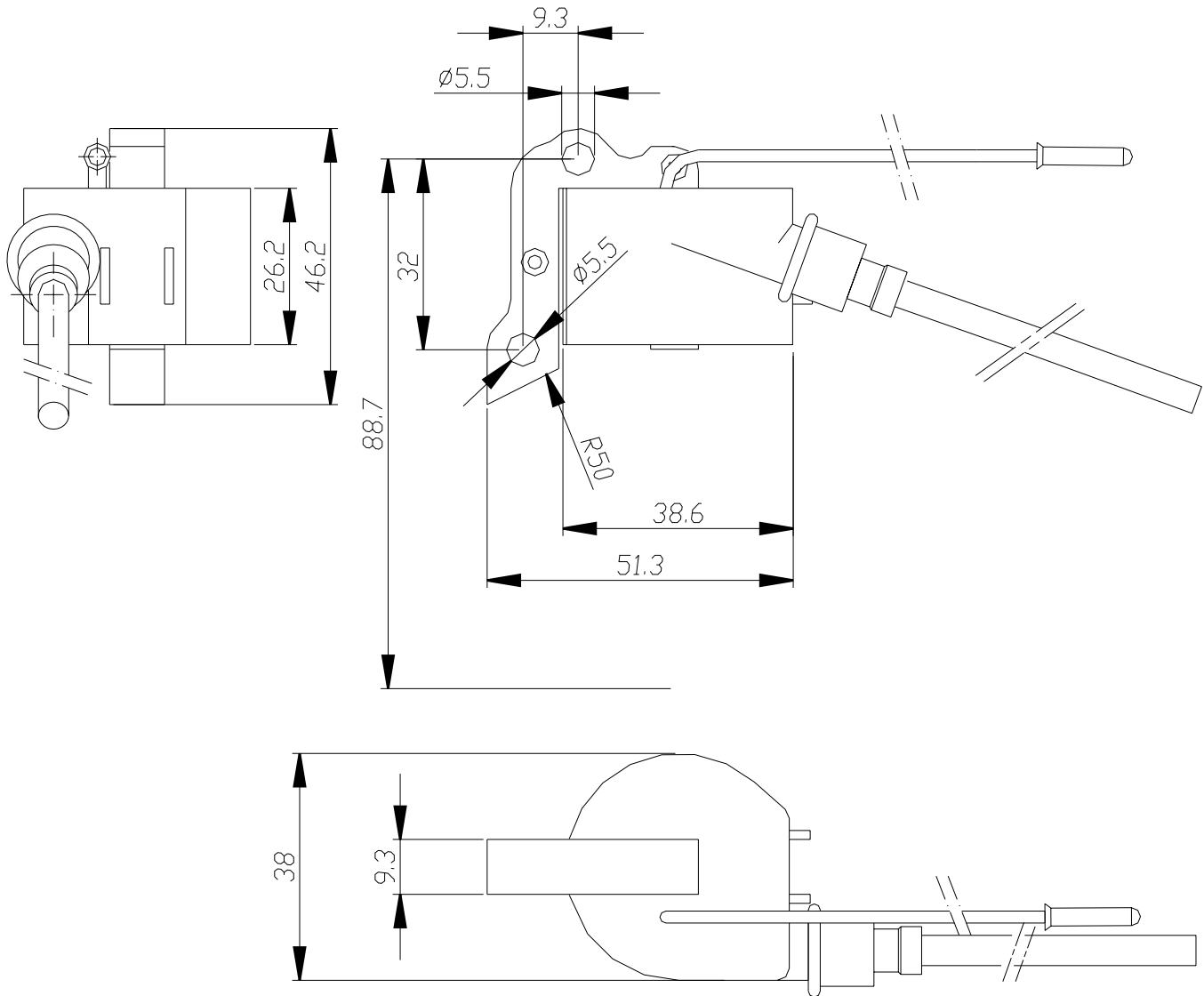
When ordering an ignition module or component, make sure to specify the correct model designation, in this case DV-112. Please let us know if you intend to operate the modules under extreme temperature conditions. We have special solutions for these cases.

PACKAGING



Refer to the package specification page at the end of this catalogue. The electronic ignition module comes in a blister package (see sketch S1) along with a high voltage cable and an ignition breaker cable. Larger quantities of the DV-112 module come in appropriately sized cartons (see sketches S2, S3, and S4).

TECHNICAL DRAWING
TYPE DV-112



TECHNICAL DATA

- * Secondary coil voltage more than 17 kV
- * Very rapid build-up of secondary voltage
- * Start-up revolution speed 500 rpm
- * Maximum revolution speed 15,000 rpm
- * Operational temperature range between -20°C and +60°C
- * Storage temperature range between -40°C and +100°C



TYPE AV-438

chain saw



TECHNICAL DRAWING



GENERAL INFORMATION



The AV-438 electronic ignition module is designed to achieve contact-free ignition of air-fuel mixtures. This type of ignition module utilises transistor

switches for magnet activation. A key feature of this module is the very low revolution speed for start-up, which translates into an easy engine start. The modules are fabricated to high standards at VEC's own modern production facility. VEC uses only high-quality components from globally established suppliers. It all adds up to a long lifetime and reliable operation.

The AV-438 module matches the original ignition module type 321 0620 supplied by ALPINA. AV-438 is specified for installation in these chain saw models manufactured by ALPINA:

330, 380, 432, and 438

WARRANTY

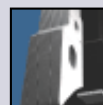
All products supplied by VEC Ignitions are covered by a five-year warranty. This warranty does not cover damages resulting from improper installation and damages caused by mechanical actions.

ORDERING



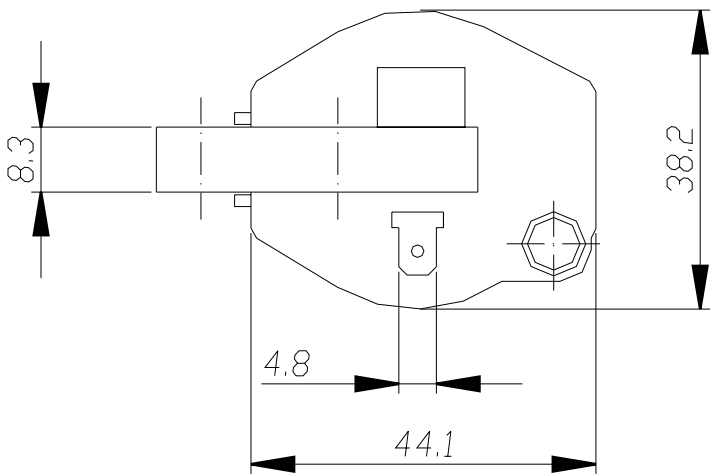
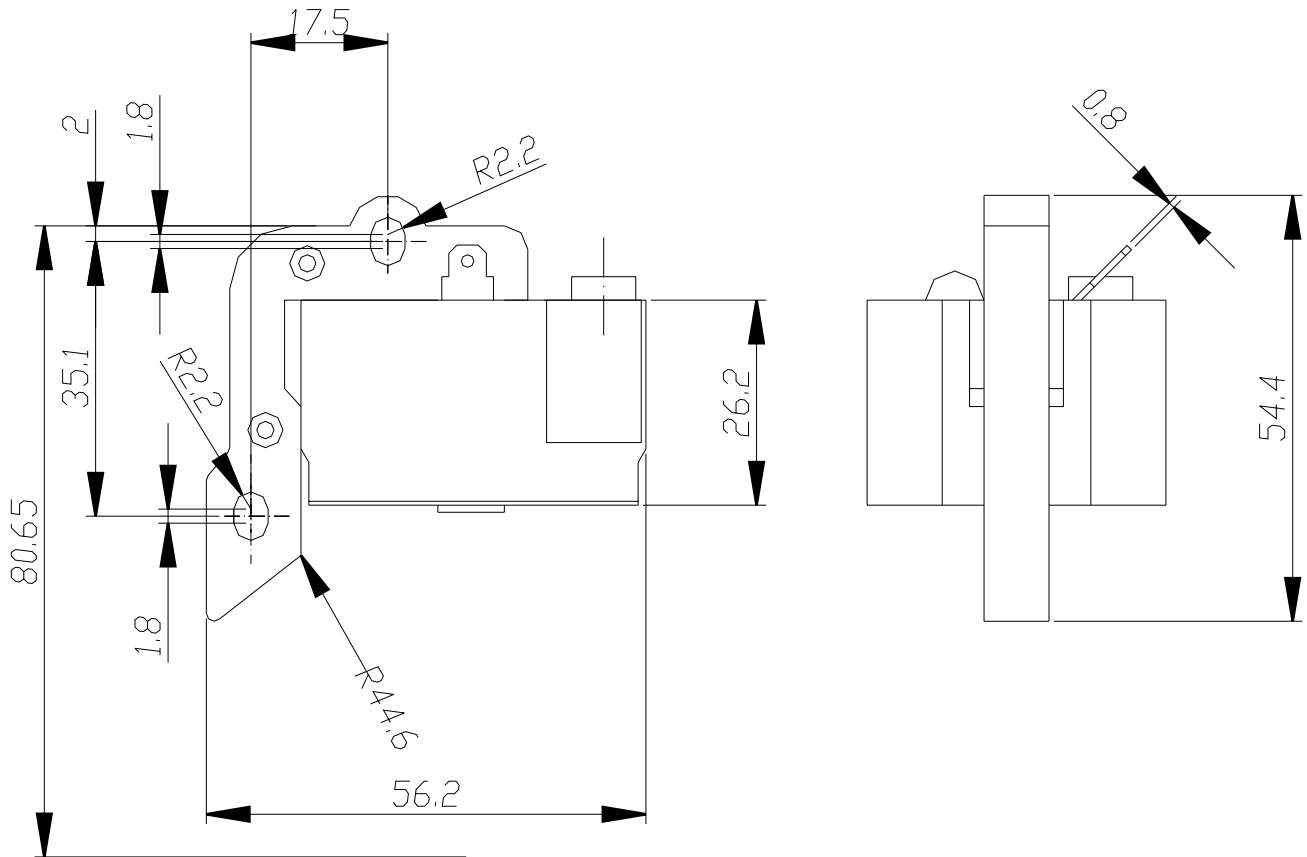
When ordering an ignition module or component, make sure to specify the correct model designation, in this case AV-438. Please let us know if you intend to operate the modules under extreme temperature conditions. We have special solutions for these cases.

PACKAGING



Refer to the package specification page at the end of this catalogue. The electronic ignition module comes in a blister package (see sketch S1) along with a high voltage cable and an ignition breaker cable. Larger quantities of the AV-438 module come in appropriately sized cartons (see sketches S2, S3, and S4).

TECHNICAL DRAWING
TYPE AV-438





TECHNICAL DATA

- * Secondary coil voltage more than 17 kV
- * Very rapid build-up of secondary voltage
- * Start-up revolution speed 500 rpm
- * Maximum revolution speed 15,000 rpm
- * Operational temperature range between -20°C and +60°C
- * Storage temperature range between -40°C and +100°C



TYPE AV-45

chain saw



TECHNICAL DRAWING



GENERAL INFORMATION



The AV-45 electronic ignition module is designed to achieve contact-free ignition of air-fuel mixtures. This type of ignition module utilises transistor

switches for magnet activation. A key feature of this module is the very low revolution speed for start-up, which translates into an easy engine start. The modules are fabricated to high standards at VEC's own modern production facility. VEC uses only high-quality components from globally established suppliers. It all adds up to a long lifetime and reliable operation.

The AV-45 module matches the original ignition module type 321 O 270 supplied by ALPINA. AV-45 is specified for installation in these chain saw models manufactured by ALPINA: 40, 41, and 45

WARRANTY

All products supplied by VEC Ignitions are covered by a five-year warranty. This warranty does not cover damages resulting from improper installation and damages caused by mechanical actions.

ORDERING



When ordering an ignition module or component, make sure to specify the correct model designation, in this case AV-45. Please let us know if you intend to operate the modules under extreme temperature conditions. We have special solutions for these cases.

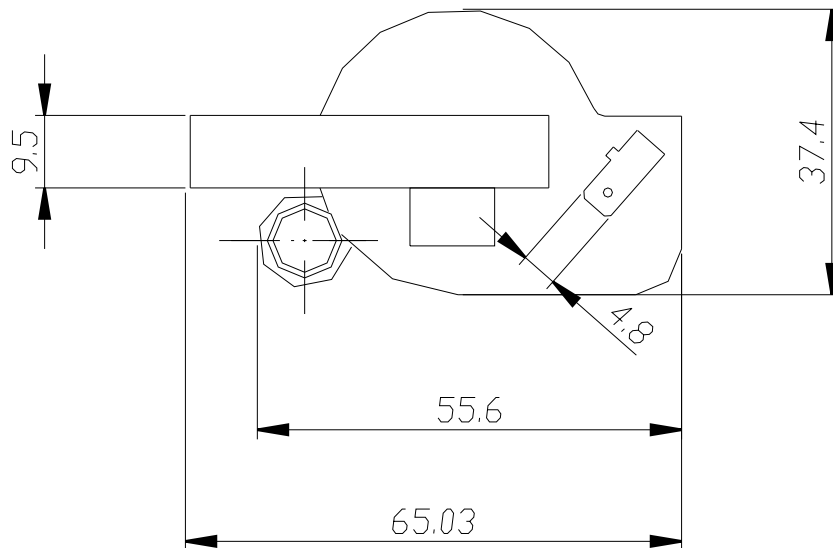
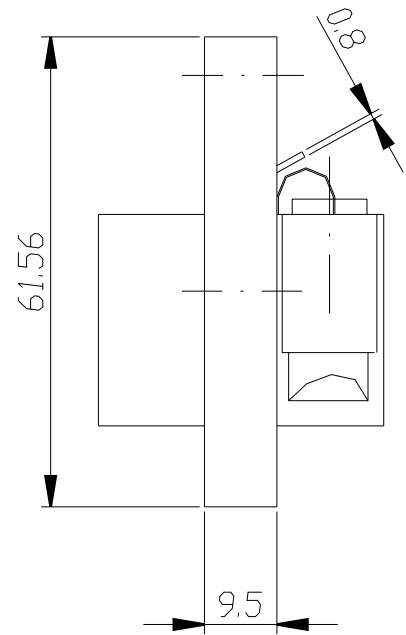
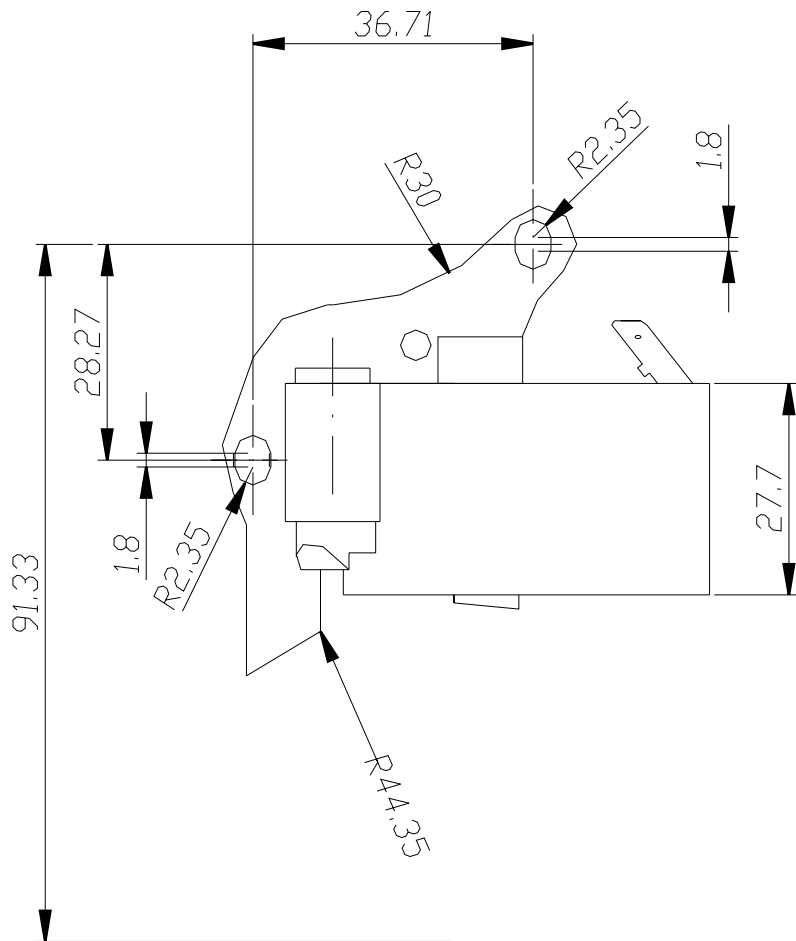
PACKAGING



Refer to the package specification page at the end of this catalogue. The electronic ignition module comes in a blister package (see sketch S1) along with a high voltage cable and an ignition breaker cable. Larger quantities of the AV-45 module come in appropriately sized cartons (see sketches S2, S3, and S4).



TECHNICAL DRAWING
TYPE AV-45





TECHNICAL DATA

- * Secondary coil voltage more than 15 kV
- * Very rapid build-up of secondary voltage
- * Start-up revolution speed 600 rpm
- * Maximum revolution speed 15,000 rpm
- * Operational temperature range between -20°C and +60°C
- * Storage temperature range between -40°C and +100°C



TYPE AV-70

chain saw



TECHNICAL
DRAWING



GENERAL INFORMATION



The AV-70 electronic ignition module is designed to achieve contact-free ignition of air-fuel mixtures. This type of ignition module utilises transistor

switches for magnet activation. The modules are fabricated to high standards at VEC's own modern production facility. VEC uses only high-quality components from globally established suppliers. It all adds up to a long lifetime and reliable operation.

The AV-70 module matches the original ignition module type 415 0 220 and 815 2 320 supplied by ALPINA. AV-70 is specified for installation in the ALPINA chain saw model 70.

WARRANTY

All products supplied by VEC Ignitions are covered by a five-year warranty. This warranty does not cover damages resulting from improper installation and damages caused by mechanical actions.

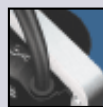
ORDERING



When ordering an ignition module or component, make sure to specify the correct model designation, in this case AV-70. Please let us know if you intend

to operate the modules under extreme temperature conditions. We have special solutions for these cases.

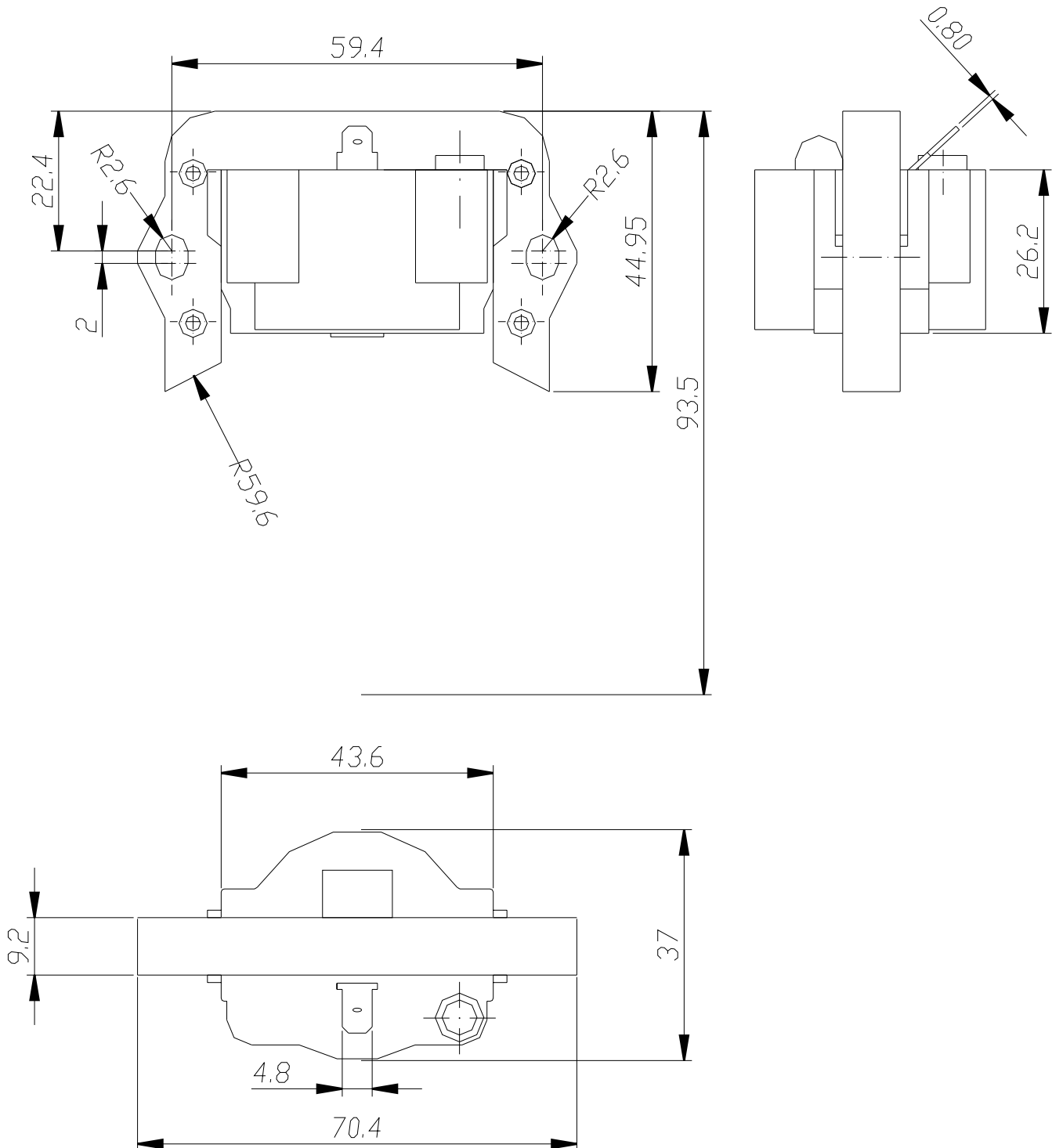
PACKAGING



Refer to the package specification page at the end of this catalogue. The electronic ignition module comes in a blister package (see sketch S1) along with a high voltage cable and an ignition breaker cable. Larger quantities of the AV-70 module come in appropriately sized cartons (see sketches S2, S3, and S4).



TECHNICAL DRAWING
TYPE AV-70





TECHNICAL DATA

- * Secondary coil voltage more than 15 kV
- * Very rapid build-up of secondary voltage
- * Start-up revolution speed 750 rpm
- * Maximum revolution speed 15,000 rpm
- * Operational temperature range between -20°C and +60°C
- * Storage temperature range between -40°C and +100°C



TYPE PV-1

chain saw



TECHNICAL
DRAWING



GENERAL INFORMATION



The PV-1 electronic ignition module is designed to achieve contact-free ignition of air-fuel mixtures. This type of ignition module utilises transistor

switches for magnet activation. The modules are fabricated to high standards at VEC's own modern production facility. VEC uses only high-quality components from globally established suppliers. It all adds up to a long lifetime and reliable operation.

The PV-1 module is specified for installation in these models manufactured by PARTNER:
R420, R421 T, P55, P70, and MP650

WARRANTY

All products supplied by VEC Ignitions are covered by a five-year warranty. This warranty does not cover damages resulting from improper installation and damages caused by mechanical actions.

ORDERING



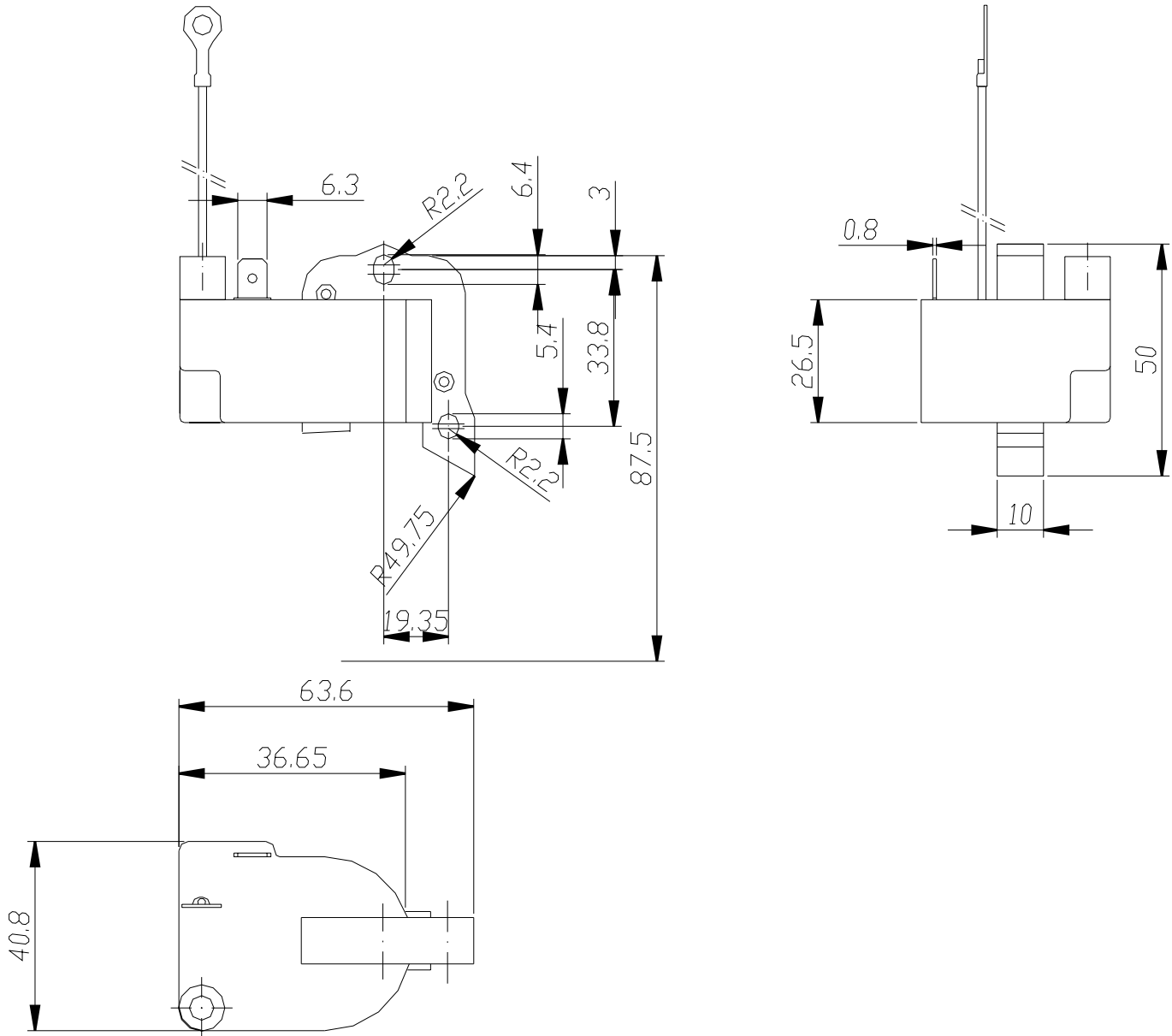
When ordering an ignition module or component, make sure to specify the correct model designation, in this case PV-1. Please let us know if you intend to operate the modules under extreme temperature conditions. We have special solutions for these cases.

PACKAGING



Refer to the package specification page at the end of this catalogue. The electronic ignition module comes in a blister package (see sketch S1) along with a high voltage cable and an ignition breaker cable. Larger quantities of the PV-1 module come in appropriately sized cartons (see sketches S2, S3, and S4).

TECHNICAL DRAWING
TYPE PV-1





TECHNICAL DATA

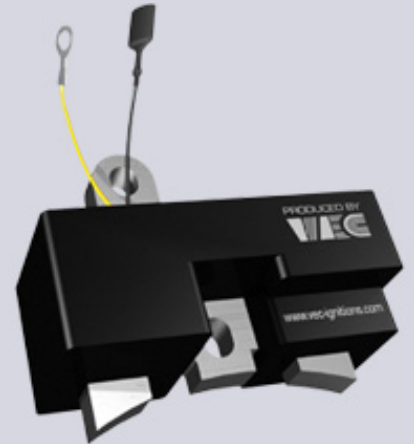
In connection with the HVZ-1 ignition coil the following specifications apply:

- * Secondary coil voltage more than 15 kV
- * Very rapid build-up of secondary voltage
- * Start-up revolution speed 900 rpm
- * Maximum revolution speed 15,000 rpm
- * Operational temperature range between -20°C and +60°C
- * Storage temperature range between -40°C and +100°C



TYPE HV-1E

chain saw



GENERAL INFORMATION



The HV-1E electronic ignition component is connected with the ignition coil to achieve fuel ignition. This type of ignition module utilises

thyristor switches for magnet activation. The modules are fabricated to high standards at VEC's own modern production facility. VEC uses only high-quality components from globally established suppliers. It all adds up to a long lifetime and reliable operation.

The HV-1E module matches the original ignition module type 501 51 12 - 01 supplied by HUSQVARNA and module types 501 51 12 - 01 , 501 51 12 - 02 supplied by JONSERED. HV-1E is specified for installation in these chain saw models manufactured by HUSQVARNA: 33, 61-OLD, 66, and 266

If is further specified for installation in these chain saw models manufactured by JONSERED: 625, 630, and 670



When ordering an ignition module or component, make sure to specify the correct model designation, in this case HV-1E. Please let us know if you intend to operate the modules under extreme temperature conditions. We have special solutions for these cases.

ORDERING

PACKAGING

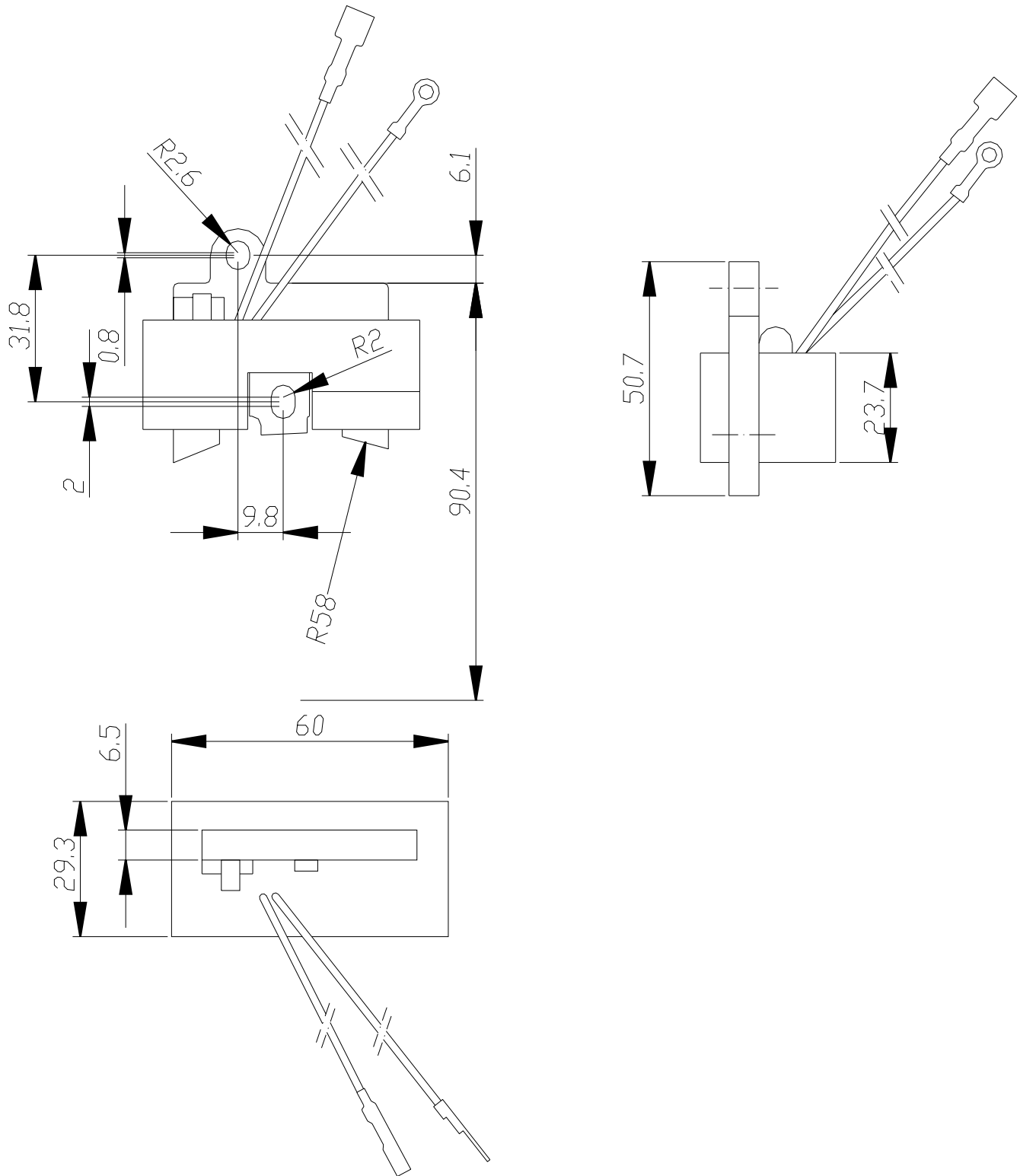


Refer to the package specification page at the end of this catalogue. The electronic ignition module comes in a blister package (see sketch S1) along with the HVZ-1 ignition coil, a high voltage cable and the ignition breaker- and discharge cables already installed. Larger quantities of the HV-1E module come in appropriately sized cartons (see sketches S2, S3, and S4).

WARRANTY

All products supplied by VEC Ignitions are covered by a five-year warranty. This warranty does not cover damages resulting from improper installation and damages caused by mechanical actions.

TECHNICAL DRAWING
TYPE HV-1E





TECHNICAL DATA

- * Secondary coil voltage more than 15 kV
- * Very rapid build-up of secondary voltage
- * Start-up revolution speed 750 rpm
- * Maximum revolution speed 15,000 rpm
- * Operational temperature range between -20°C and +60°C
- * Storage temperature range between -40°C and +100°C

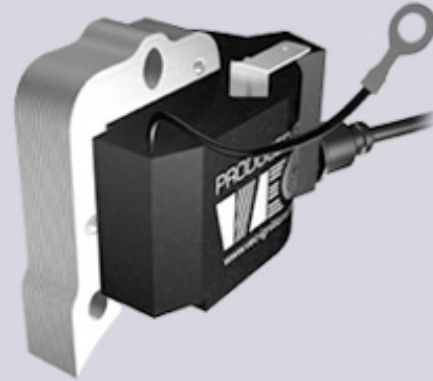


TYPE HV-2

chain saw



TECHNICAL DRAWING



GENERAL INFORMATION



The HV-2 electronic ignition module is designed to achieve contact-free ignition of air-fuel mixtures. This type of ignition module utilises transistor

switches for magnet activation. The modules are fabricated to high standards at VEC's own modern production facility. VEC uses only high-quality components from globally established suppliers. It all adds up to a long lifetime and reliable operation.

The HV-2 module matches the original ignition module type 503 90 12 - 01 supplied by HUSQVARNA. HV-2 is specified for installation in these chain saw models manufactured by HUSQVARNA:

48, 50, 51EPA, 61-NEW, 240R, 245R, 250PS, 250Rx, 254, 257, 261, 262, 268, 268K, 272, and 272K



When ordering an ignition module or component, make sure to specify the correct model designation, in this case HV-2. Please let us know if you intend to operate the modules under extreme temperature conditions. We have special solutions for these cases.

ORDERING

PACKAGING

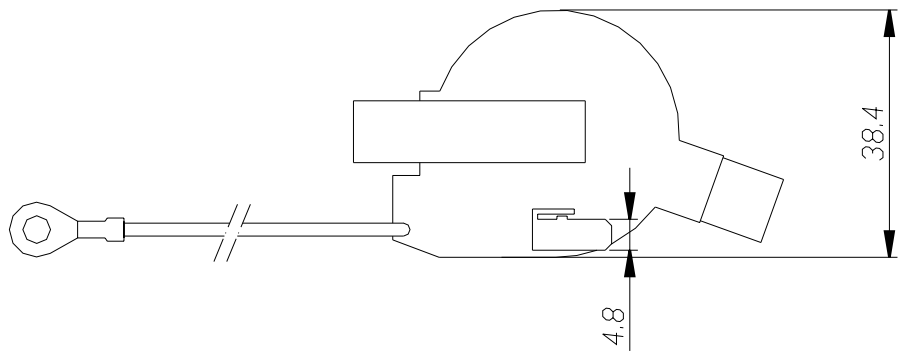
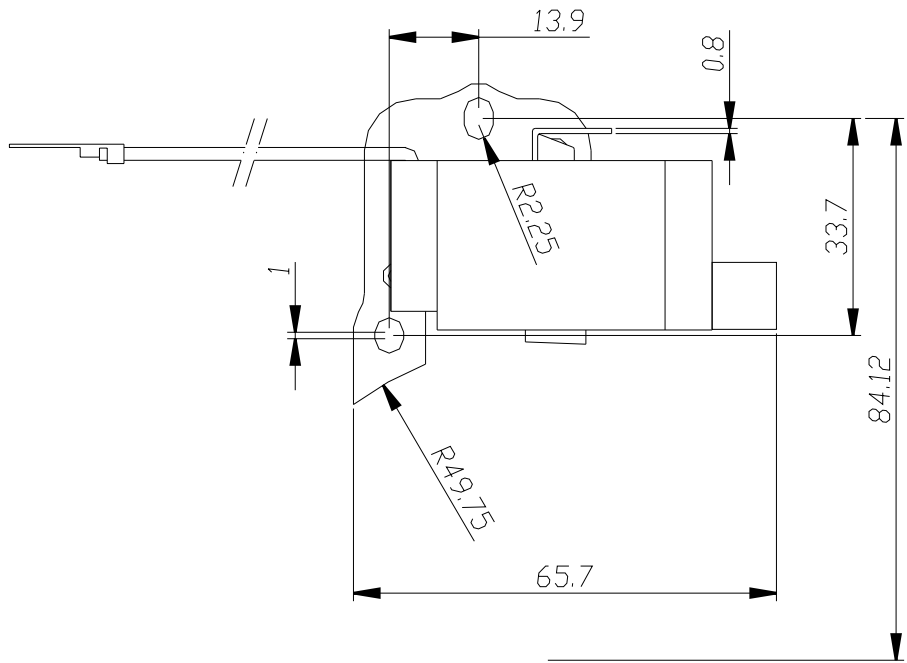
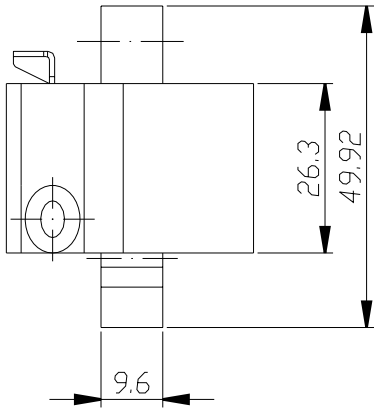


Refer to the package specification page at the end of this catalogue. The electronic ignition module comes in a blister package (see sketch S1) along with a high voltage cable and an ignition breaker cable. Larger quantities of the HV-2 module come in appropriately sized cartons (see sketches S2, S3, and S4).

WARRANTY

All products supplied by VEC Ignitions are covered by a five-year warranty. This warranty does not cover damages resulting from improper installation and damages caused by mechanical actions.

TECHNICAL DRAWING
TYPE HV-2





TECHNICAL DATA

In connection with the HVZ-3 ignition coil the following specifications apply:

- * Secondary coil voltage more than 15 kV
- * Very rapid build-up of secondary voltage
- * Start-up revolution speed 900 rpm
- * Maximum revolution speed 15,000 rpm
- * Operational temperature range between -20°C and +60°C
- * Storage temperature range between -40°C and +100°C

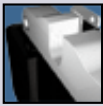


TYPE HV-3E

chain saw



GENERAL INFORMATION



The HV-3E electronic ignition component is connected with the ignition coil to achieve fuel ignition. This type of ignition module utilises

thyristor switches for magnet activation. The modules are fabricated to high standards at VEC's own modern production facility. VEC uses only high-quality components from globally established suppliers. It all adds up to a long lifetime and reliable operation.

The HV-3E module matches the original ignition module type 501 81 28 - 01 supplied by HUSQVARNA. HV-3E is specified for installation in these chain saw models manufactured by HUSQVARNA:

36R, 42, 181, 234, 238, 268R, 242, 246, 281 and 288

WARRANTY

All products supplied by VEC Ignitions are covered by a five-year warranty. This warranty does not cover damages resulting from improper installation and damages caused by mechanical actions.

ORDERING



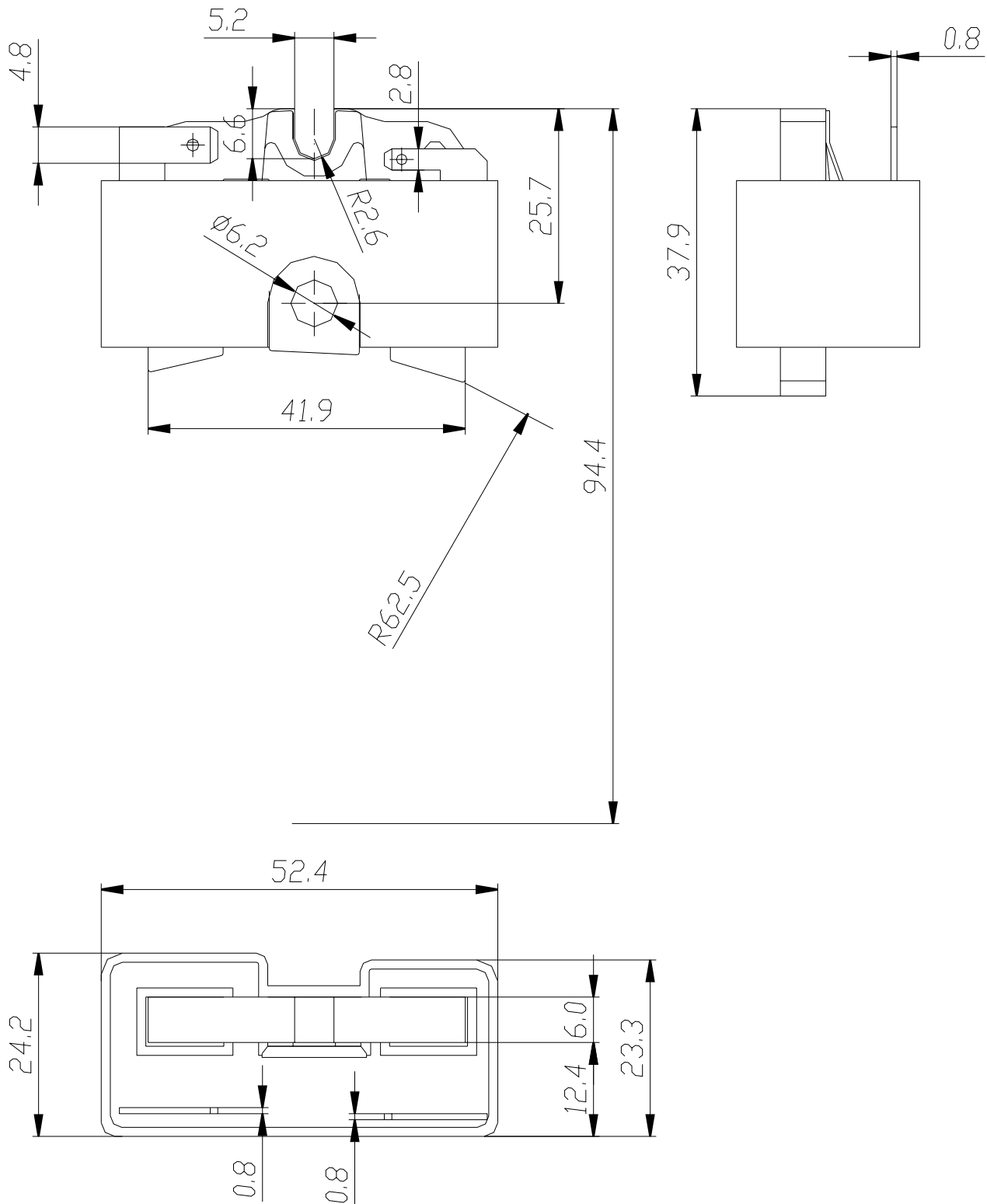
When ordering an ignition module or component, make sure to specify the correct model designation, in this case HV-3E. Please let us know if you intend to operate the modules under extreme temperature conditions. We have special solutions for these cases.

PACKAGING



Refer to the package specification page at the end of this catalogue. The electronic ignition module comes in a blister package (see sketch S1) along with the HVZ-3 ignition coil, a high voltage cable and the ignition breaker- and discharge cables already installed. Larger quantities of the HV-3E module come in appropriately sized cartons (see sketches S2, S3, and S4).

TECHNICAL DRAWING
TYPE HV-3E





TECHNICAL DATA

- * Secondary coil voltage more than 17 kV
- * Very rapid build-up of secondary voltage
- * Start-up revolution speed 500 rpm
- * Maximum revolution speed 15,000 rpm
- * Operational temperature range between -20°C and +60°C
- * Storage temperature range between -40°C and +100°C



TYPE TV-1

water pump



TECHNICAL DRAWING



GENERAL INFORMATION



The TV-1 electronic ignition module is designed to achieve contact-free ignition of air-fuel mixtures. This type of ignition module utilises transistor

switches for magnet activation. A key feature of this module is the very low revolution speed for start-up, which translates into an easy engine start. The modules are fabricated to high standards at VEC's own modern production facility. VEC uses only high-quality components from globally established suppliers. It all adds up to a long lifetime and reliable operation.

The TV-1 module is specified for installation in the water pump TOMOS model UMO-4.

WARRANTY

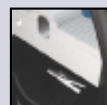
All products supplied by VEC Ignitions are covered by a five-year warranty. This warranty does not cover damages resulting from improper installation and damages caused by mechanical actions.

ORDERING



When ordering an ignition module or component, make sure to specify the correct model designation, in this case TV-1. Please let us know if you intend to operate the modules under extreme temperature conditions. We have special solutions for these cases.

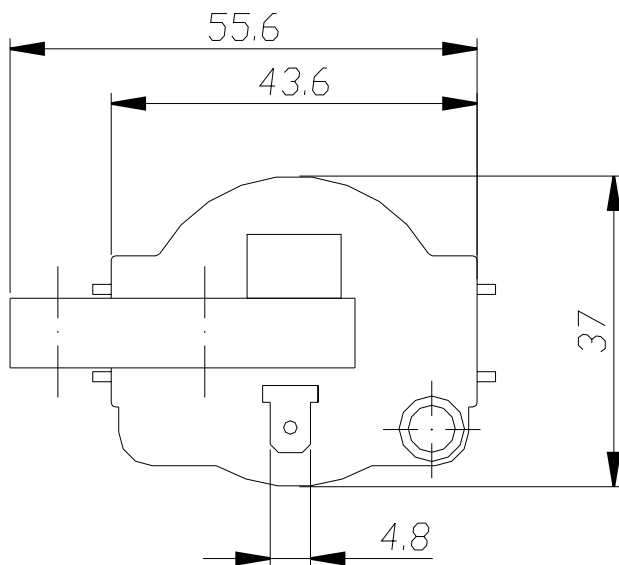
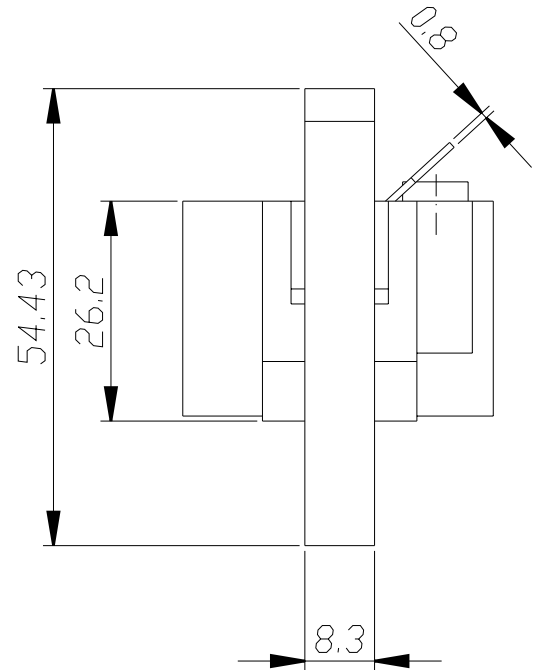
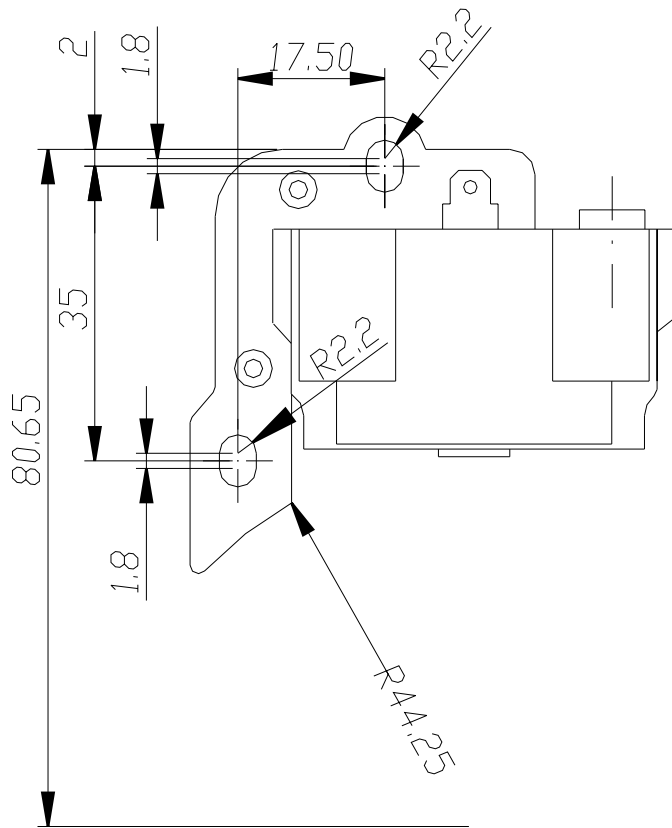
PACKAGING



Refer to the package specification page at the end of this catalogue. The electronic ignition module comes in a blister package (see sketch S1) along with a high voltage cable and an ignition breaker cable. Larger quantities of the TV-1 module come in appropriately sized cartons (see sketches S2, S3, and S4).



TECHNICAL DRAWING TYPE TV-1





TECHNICAL DATA

In connection with the initiator coil the following specifications apply:

- * Secondary coil voltage more than 15 kV
- * Start-up revolution speed 400 rpm
- * Maximum revolution speed 10,000 rpm
- * Operational temperature range between -20°C and +60°C



TYPE TV-3

motorbike
outboard engine



GENERAL INFORMATION



The TV-3 electronic ignition component is connected with breaker contacts to the initiator coil to achieve fuel ignition.

The modules are fabricated to high standards at VEC's own modern production facility. VEC uses only high-quality components from globally established suppliers. It all adds up to a long lifetime and reliable operation.

The TV-3 module is suited for installation in motorbikes and outboard engines manufactured by TOMOS.

WARRANTY

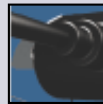
All products supplied by VEC Ignitions are covered by a five-year warranty. This warranty does not cover damages resulting from improper installation and damages caused by mechanical actions.

ORDERING



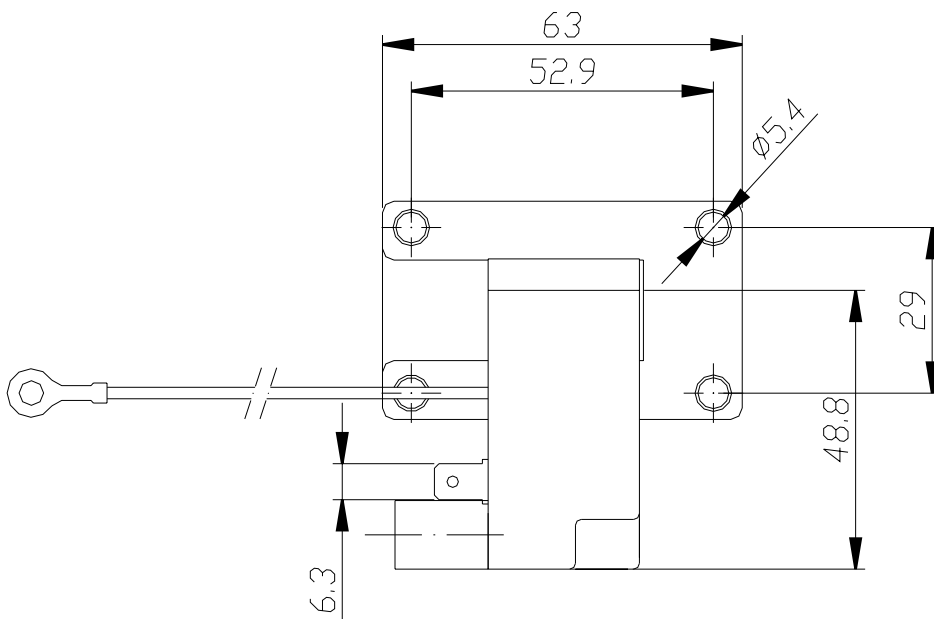
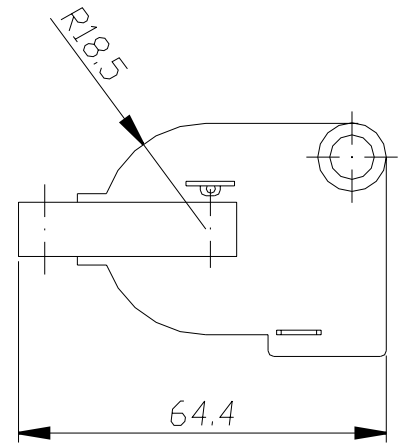
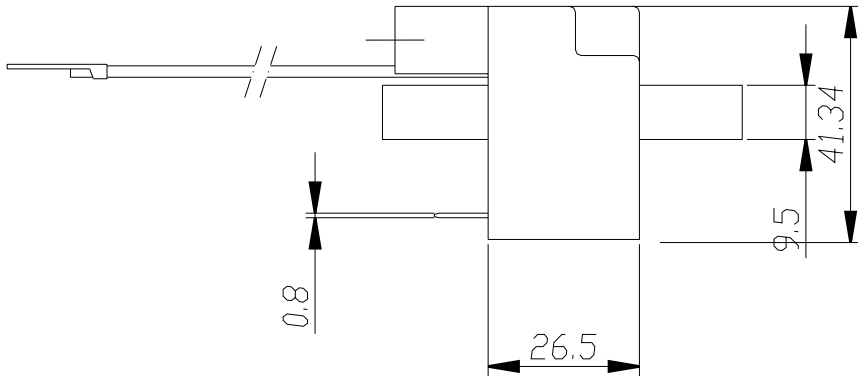
When ordering an ignition module or component, make sure to specify the correct model designation, in this case TV-3.

PACKAGING



Refer to the package specification page at the end of this catalogue. The electronic ignition module comes in a blister package (see sketch S1) along with a high voltage cable. Larger quantities of the TV-3 module come in appropriately sized cartons (see sketches S2, S3, and S4).

TECHNICAL DRAWING
TYPE TV-3



TECHNICAL DATA

- * Secondary coil voltage more than 18 kV
- * Very rapid build-up of secondary voltage
- * Start-up revolution speed 300 rpm
- * Maximum revolution speed 9000 rpm
- * Operational temperature range between -20°C and +60°C
- * Storage temperature range between -40°C and +100°C



TYPE TV-4

motorbike
outboard engine



GENERAL INFORMATION



The TV-4 electronic ignition module is designed to achieve contact-free ignition of air-fuel mixtures. This type of ignition module utilises thyristor

switches for magnet activation. The modules are fabricated to high standards at VEC's own modern production facility. VEC uses only high-quality components from globally established suppliers. It all adds up to a long lifetime and reliable operation.

The TV-4 module is specified for installation in these outboard engines manufactured by TOMOS:

T4, T4.5, and T4.8

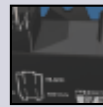
If is further specified for installation in the BT moped manufactured by TOMOS:

625, 630, and 670

WARRANTY

All products supplied by VEC Ignitions are covered by a five-year warranty. This warranty does not cover damages resulting from improper installation and damages caused by mechanical actions.

ORDERING



When ordering an ignition module or component, make sure to specify the correct model designation, in this case TV-4. Please let us know if you intend

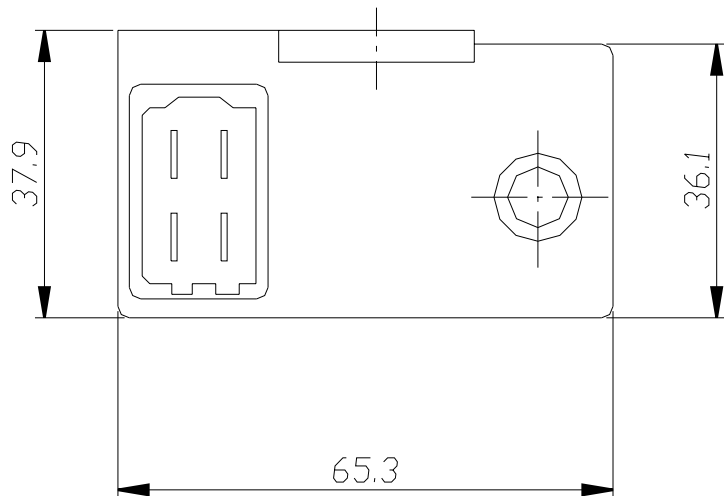
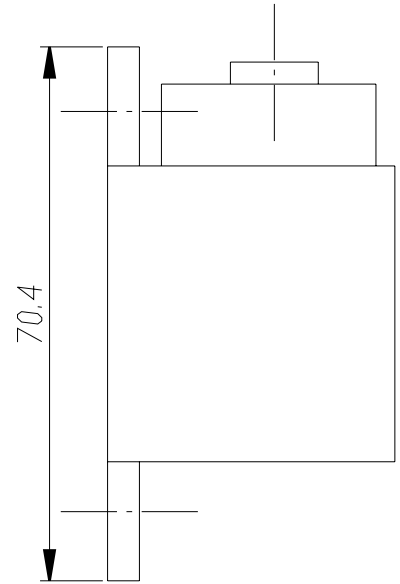
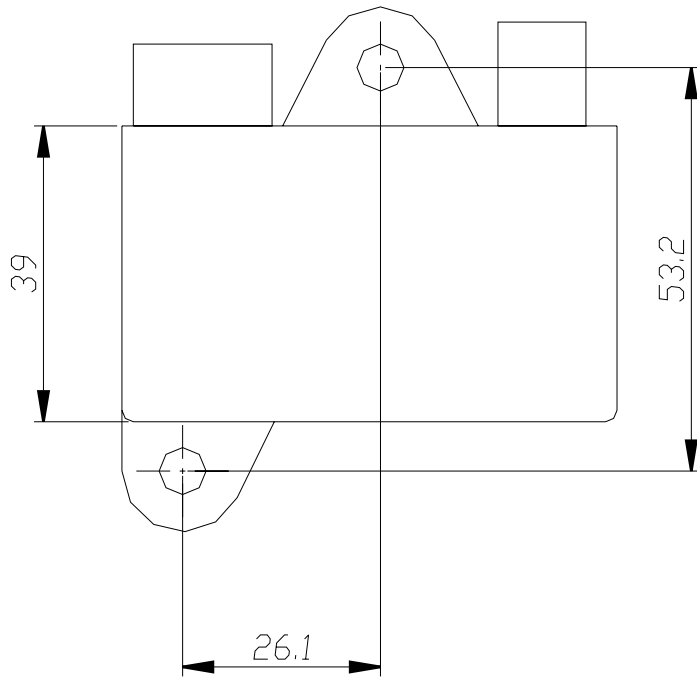
to operate the modules under extreme temperature conditions. We have special solutions for these cases.

PACKAGING



Refer to the package specification page at the end of this catalogue. The electronic ignition module comes in a blister package (see sketch S1) along with a high voltage cable. Larger quantities of the TV-4 module come in appropriately sized cartons (see sketches S2, S3, and S4).

TECHNICAL DRAWING
TYPE TV-4





TECHNICAL DATA

- * Secondary coil voltage more than 18 kV
- * Very rapid build-up of secondary voltage
- * Start-up revolution speed 300 rpm
- * Maximum revolution speed 9000 rpm
- * Operational temperature range between -20°C and +60°C
- * Storage temperature range between -40°C and +100°C



TYPE TV-5

outboard engine



TECHNICAL DRAWING



GENERAL INFORMATION



The TV-5 electronic ignition module is designed to achieve contact-free ignition of air-fuel mixtures. This type of ignition module utilises thyristor

switches for magnet activation. The modules are fabricated to high standards at VEC's own modern production facility. VEC uses only high-quality components from globally established suppliers. It all adds up to a long lifetime and reliable operation.

The TV-5 module is specified for installation in these outboard engines manufactured by

TOMOS:
 T10 and T18

WARRANTY

All products supplied by VEC Ignitions are covered by a five-year warranty. This warranty does not cover damages resulting from improper installation and damages caused by mechanical actions.

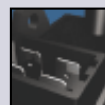
ORDERING



When ordering an ignition module or component, make sure to specify the correct model designation, in this case TV-5. Please let us know if you intend

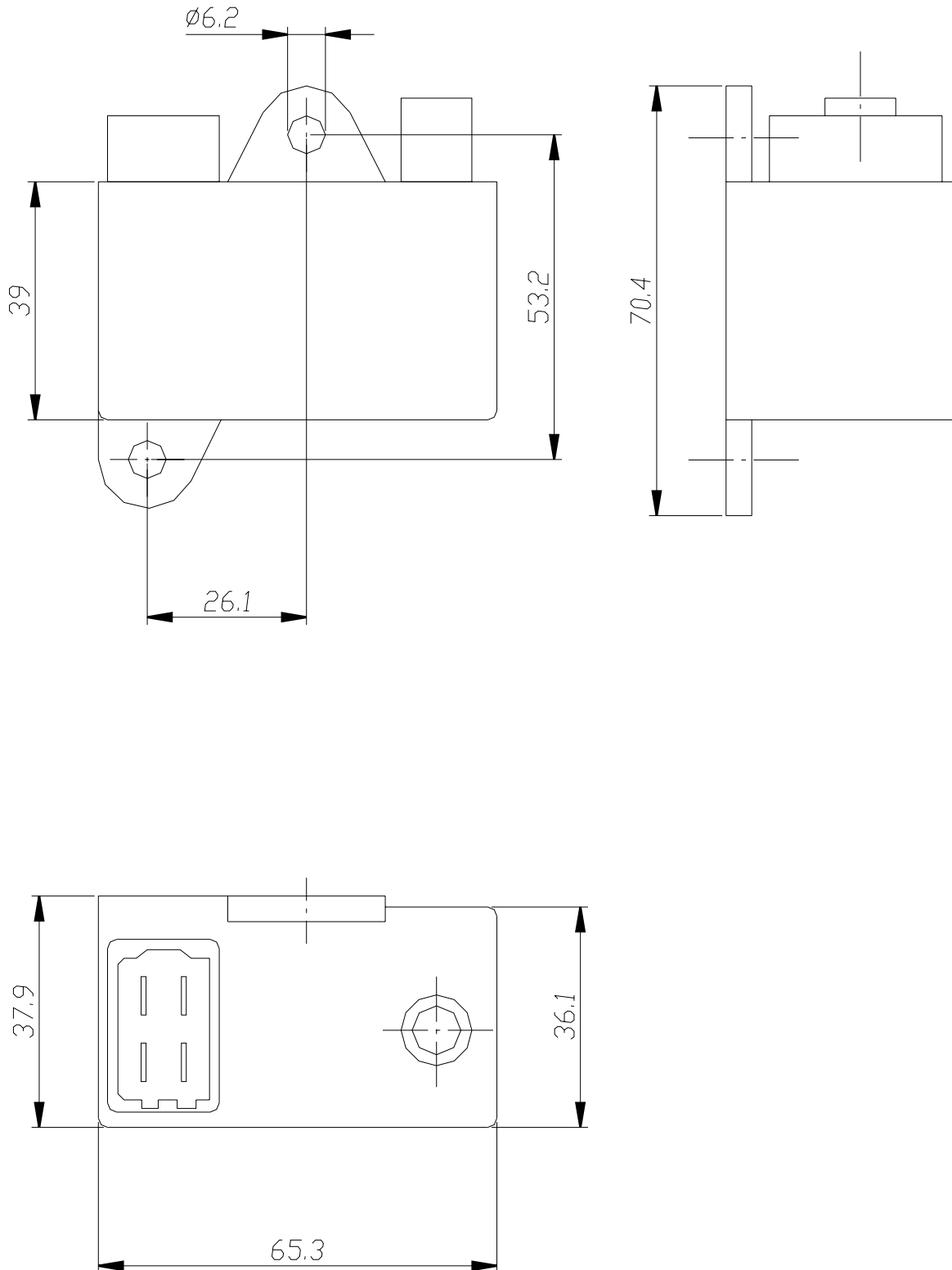
to operate the modules under extreme temperature conditions. We have special solutions for these cases.

PACKAGING



Refer to the package specification page at the end of this catalogue. The electronic ignition module comes in a blister package (see sketch S1) along with a high voltage cable. Larger quantities of the TV-5 module come in appropriately sized cartons (see sketches S2, S3, and S4).

TECHNICAL DRAWING
TYPE TV-5





TECHNICAL DATA

- * Secondary coil voltage more than 17 kV
- * Very rapid build-up of secondary voltage
- * Start-up revolution speed 500 rpm
- * Maximum revolution speed 15,000 rpm
- * Operational temperature range between -20°C and +60°C
- * Storage temperature range between -40°C and +100°C



TYPE OV-1

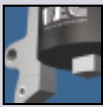
chain saw



TECHNICAL DRAWING



GENERAL INFORMATION



The OV-1 electronic ignition module is designed to achieve contact-free ignition of air-fuel mixtures. This type of ignition module utilises transistor

switches for magnet activation. A key feature of this module is the very low revolution speed for start-up, which translates into an easy engine start. The modules are fabricated to high standards at VEC's own modern production facility. VEC uses only high-quality components from globally established suppliers. It all adds up to a long lifetime and reliable operation.

The OV-1 module matches the original ignition module types 1478 and 1479 supplied by OEM. OV-1 is specified for installation in these chain saw models manufactured by OEM:

145 and 150.

WARRANTY

All products supplied by VEC Ignitions are covered by a five-year warranty. This warranty does not cover damages resulting from improper installation and damages caused by mechanical actions.

ORDERING



When ordering an ignition module or component, make sure to specify the correct model designation, in this case OV-1. Please let us know if you intend

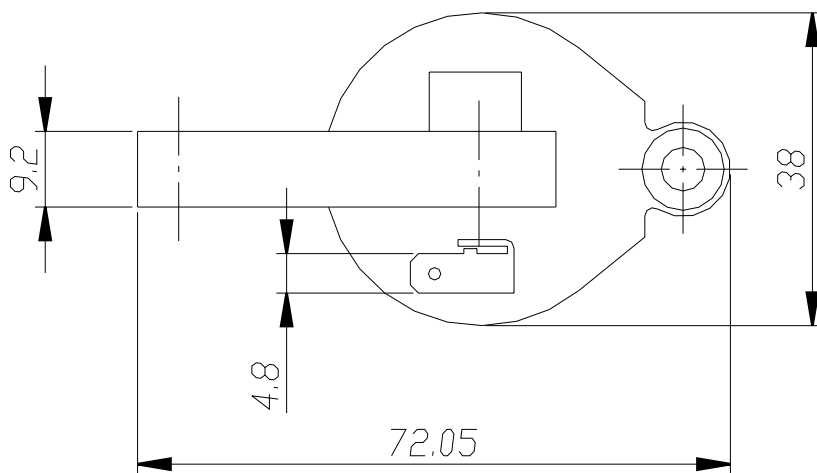
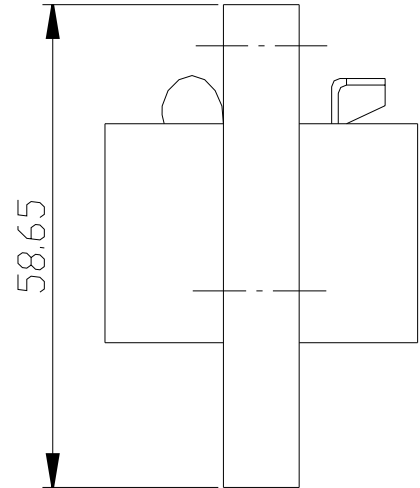
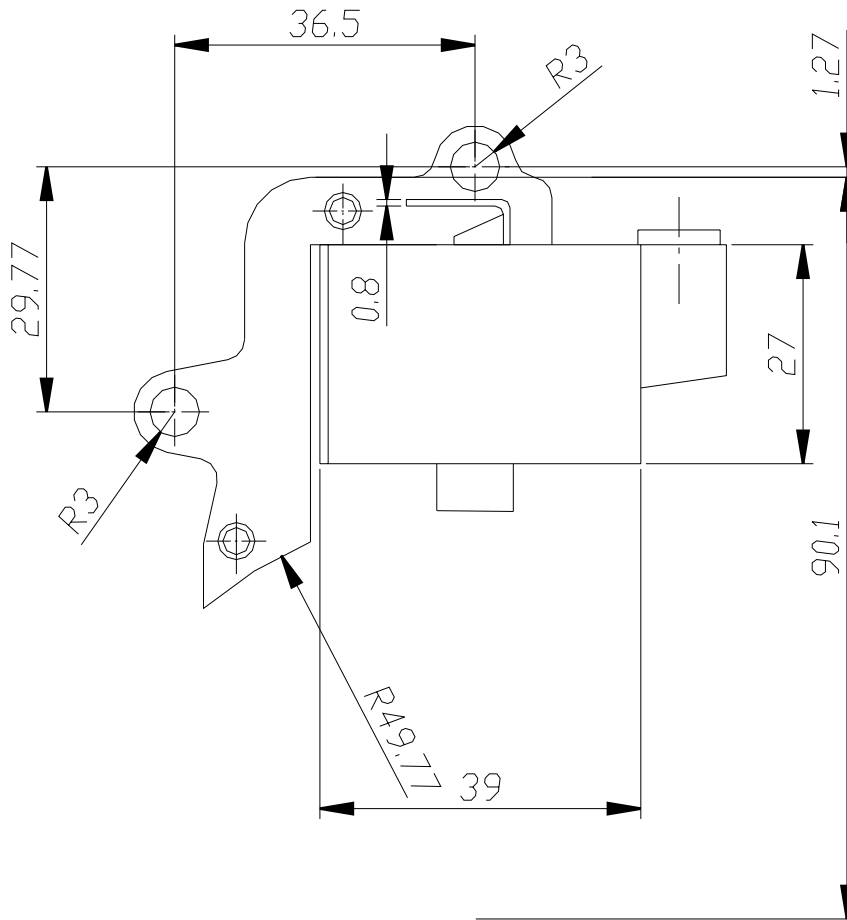
to operate the modules under extreme temperature conditions. We have special solutions for these cases.

PACKAGING



Refer to the package specification page at the end of this catalogue. The electronic ignition module comes in a blister package (see sketch S1) along with a high voltage cable and an ignition breaker cable. Larger quantities of the OV-1 module come in appropriately sized cartons (see sketches S2, S3, and S4).

TECHNICAL DRAWING
TYPE OV-1



TECHNICAL DATA

- * Secondary coil voltage more than 17 kV
- * Very rapid build-up of secondary voltage
- * Start-up revolution speed 500 rpm
- * Maximum revolution speed 15,000 rpm
- * Operational temperature range between -20°C and +60°C
- * Storage temperature range between -40°C and +100°C



TYPE OV-2

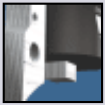
chain saw



TECHNICAL DRAWING



GENERAL INFORMATION

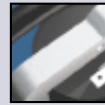


The OV-2 electronic ignition module is designed to achieve contact-free ignition of air-fuel mixtures. This type of ignition module utilises transistor

switches for magnet activation. A key feature of this module is the very low revolution speed for start-up, which translates into an easy engine start. The modules are fabricated to high standards at VEC's own modern production facility. VEC uses only high-quality components from globally established suppliers. It all adds up to a long lifetime and reliable operation.

The OV-2 module matches the original ignition module types 1928 and 1929 supplied by OEM. OV-2 is specified for installation in these chain saw models manufactured by OEM:

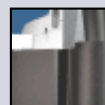
152, 157, and 165



When ordering an ignition module or component, make sure to specify the correct model designation, in this case OV-2. Please let us know if you intend to operate the modules under extreme temperature conditions. We have special solutions for these cases.

ORDERING

PACKAGING

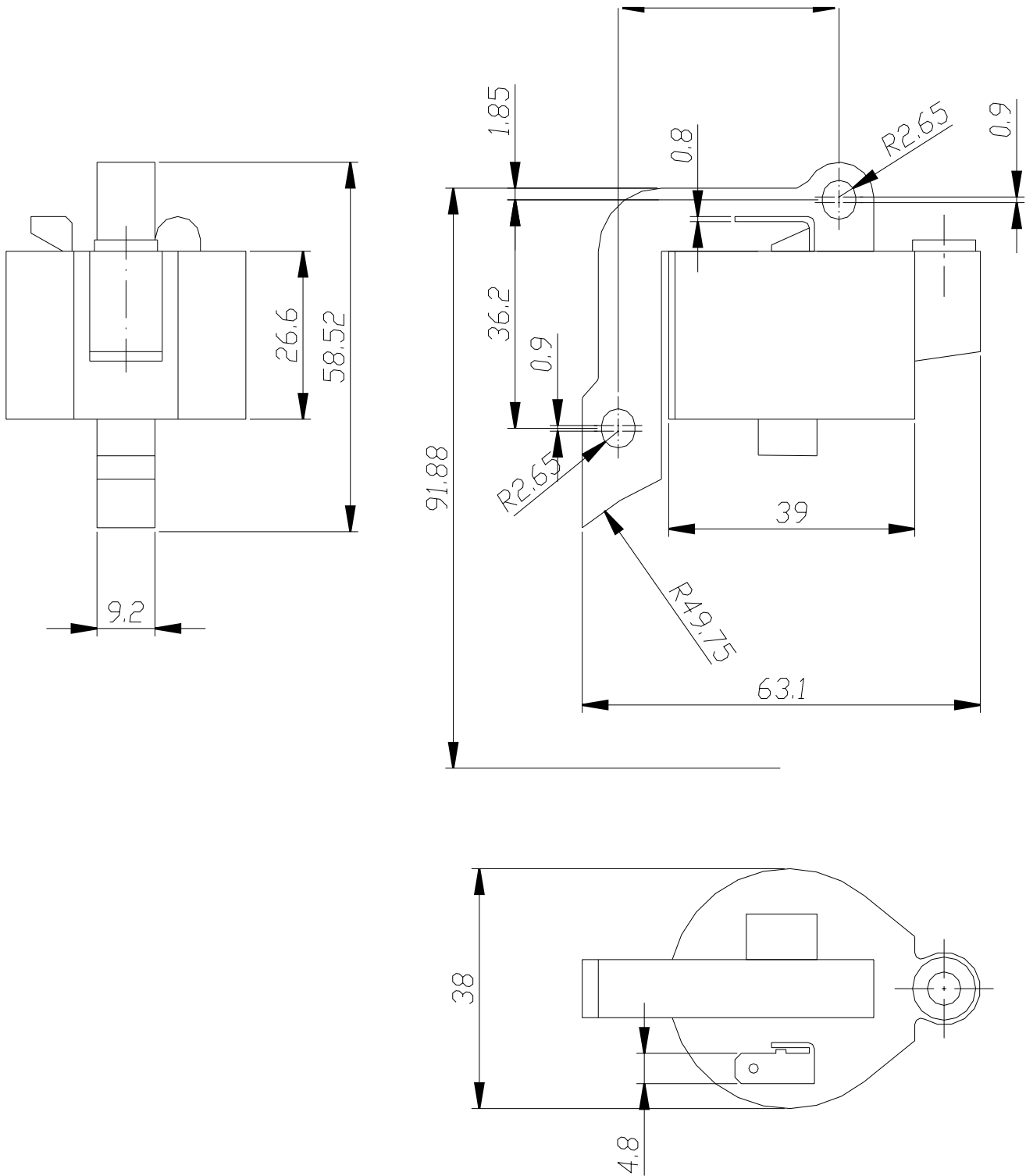


Refer to the package specification page at the end of this catalogue. The electronic ignition module comes in a blister package (see sketch S1) along with a high voltage cable and an ignition breaker cable. Larger quantities of the OV-2 module come in appropriately sized cartons (see sketches S2, S3, and S4).

WARRANTY

All products supplied by VEC Ignitions are covered by a five-year warranty. This warranty does not cover damages resulting from improper installation and damages caused by mechanical actions.

TECHNICAL DRAWING
TYPE OV-2



TECHNICAL DATA

- * Secondary coil voltage more than 20 kV
- * Very rapid build-up of secondary voltage
- * Start-up revolution speed 200 rpm
- * Maximum revolution speed 4,500 rpm
- * Operational temperature range between -20°C and +60°C
- * Storage temperature range between -40°C and +100°C

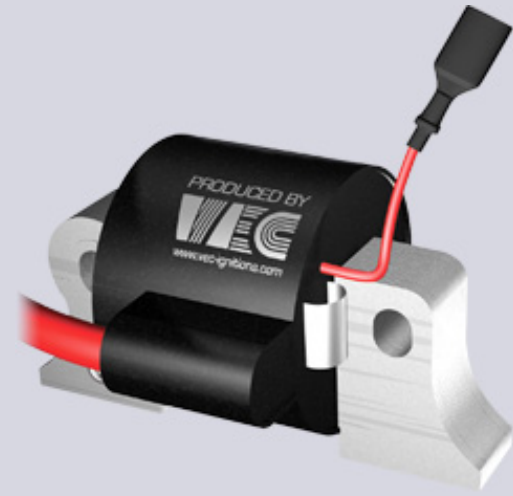


TYPE MV-1

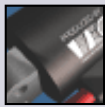
powered turf digger



TECHNICAL DRAWING



GENERAL INFORMATION



The MV-1 electronic ignition module is designed to achieve contact-free ignition of air-fuel mixtures. This type of ignition module utilises transistor

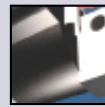
switches for magnet activation. A key feature of this module is the very low revolution speed for start-up, which translates into an easy engine start. The modules are fabricated to high standards at VEC's own modern production facility. VEC uses only high-quality components from globally established suppliers. It all adds up to a long lifetime and reliable operation.

The MV-1 module is specified for installation in the LA-300 powered turf digger manufactured by either LOMARDINI or DMB

WARRANTY

All products supplied by VEC Ignitions are covered by a five-year warranty. This warranty does not cover damages resulting from improper installation and damages caused by mechanical actions.

ORDERING



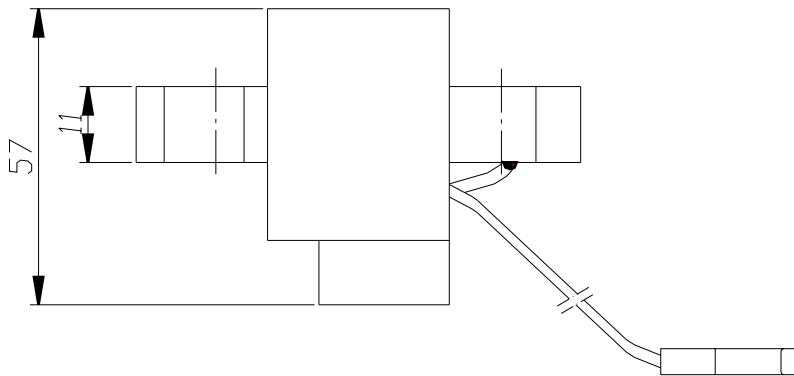
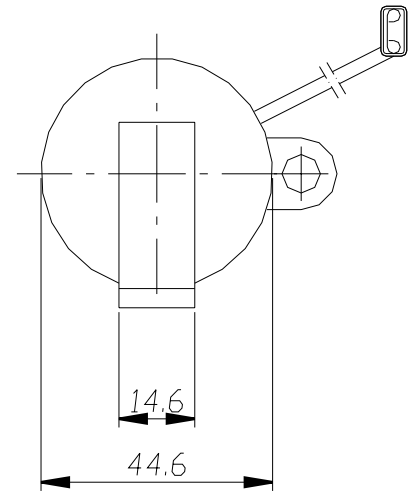
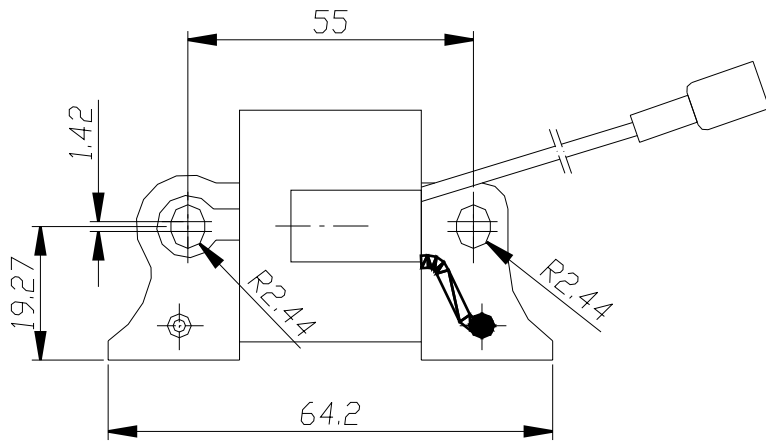
When ordering an ignition module or component, make sure to specify the correct model designation, in this case MV-1. Please let us know if you intend to operate the modules under extreme temperature conditions. We have special solutions for these cases.

PACKAGING



Refer to the package specification page at the end of this catalogue. The electronic ignition module comes in a blister package (see sketch S1) along with a high voltage cable and an ignition breaker cable. Larger quantities of the MV-1 module come in appropriately sized cartons (see sketches S2, S3, and S4).

TECHNICAL DRAWING
TYPE MV-1



TECHNICAL DATA

- * Secondary coil voltage more than 20 kV
- * Very rapid build-up of secondary voltage
- * Start-up revolution speed 230 rpm
- * Maximum revolution speed 4,500 rpm
- * Operational temperature range between -20°C and +60°C
- * Storage temperature range between -40°C and +100°C



TYPE IV-300

lawn mower
 water pump
 powered turf digger



GENERAL INFORMATION



The IV-300 electronic ignition module is designed to achieve contact-free ignition of air-fuel mixtures. This type of ignition module utilises transistor

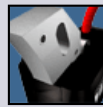
switches for magnet activation. A key feature of this module is the very low revolution speed for start-up, which translates into an easy engine start. The modules are fabricated to high standards at VEC's own modern production facility. VEC uses only high-quality components from globally established suppliers. It all adds up to a long lifetime and reliable operation.

The IV-300 module is specified for installation in the IM300, IM350 and IM359 powered turf digger manufactured by either INTERMOTOR and in the A349 and A360 powered turf digger manufactured by either AKME.

WARRANTY

All products supplied by VEC Ignitions are covered by a five-year warranty. This warranty does not cover damages resulting from improper installation and damages caused by mechanical actions.

ORDERING



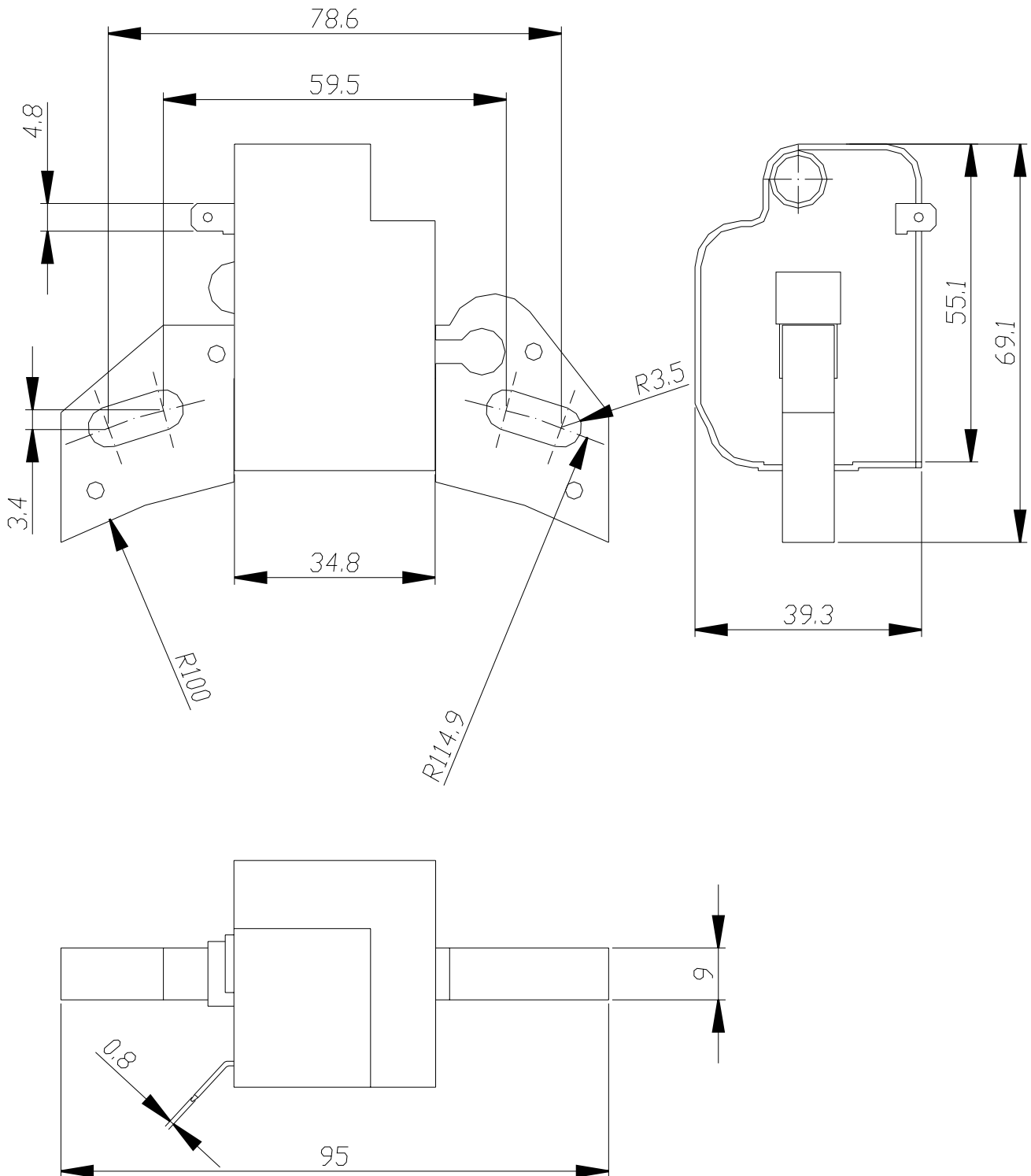
When ordering an ignition module or component, make sure to specify the correct model designation, in this case IV-300. Please let us know if you intend to operate the modules under extreme temperature conditions. We have special solutions for these cases.

PACKAGING



Refer to the package specification page at the end of this catalogue. The electronic ignition module comes in a blister package (see sketch S1) along with a high voltage cable and an ignition breaker cable. Larger quantities of the IV-300 module come in appropriately sized cartons (see sketches S2, S3, and S4).

TECHNICAL DRAWING
TYPE IV-300





TECHNICAL DATA



TYPE ATV-1

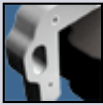
**lawn mower
 water pump
 powered turf digger**



**TECHNICAL
 DRAWING**

- * Secondary coil voltage more than 15 kV
- * Very rapid build-up of secondary voltage
- * Start-up revolution speed 250 rpm
- * Maximum revolution speed 5,000 rpm
- * Operational temperature range between -20°C and +60°C
- * Storage temperature range between -40°C and +100°C

GENERAL INFORMATION



The ATV-1 electronic ignition module is designed to achieve contact-free ignition of air-fuel mixtures. This type of ignition module utilises thyristor

switches for magnet activation. A key feature of this module is the very low revolution speed for start-up, which translates into an easy engine start. The modules are fabricated to high standards at VEC's own modern production facility. VEC uses only high-quality components from globally established suppliers. It all adds up to a long lifetime and reliable operation.

The module ATV-1 matches the original ignition module type 1416.0034 supplied by Tecnamotor and module types 34443A , 34443B supplied by Tecumseh. ATV-1 is specified for installation in powered turf diggers manufactured by Tecumseh or Tecnamotor:

TVS90, H30, AH600, HSK600, AV520, H35, H40, HSK70, HSK600, HSK850, LEV100, LEV115, and TVXL840.



When ordering an ignition module or component, make sure to specify the correct model designation, in this case ATV-1. Please let us know if you intend

to operate the modules under extreme temperature conditions. We have special solutions for these cases.

ORDERING

PACKAGING



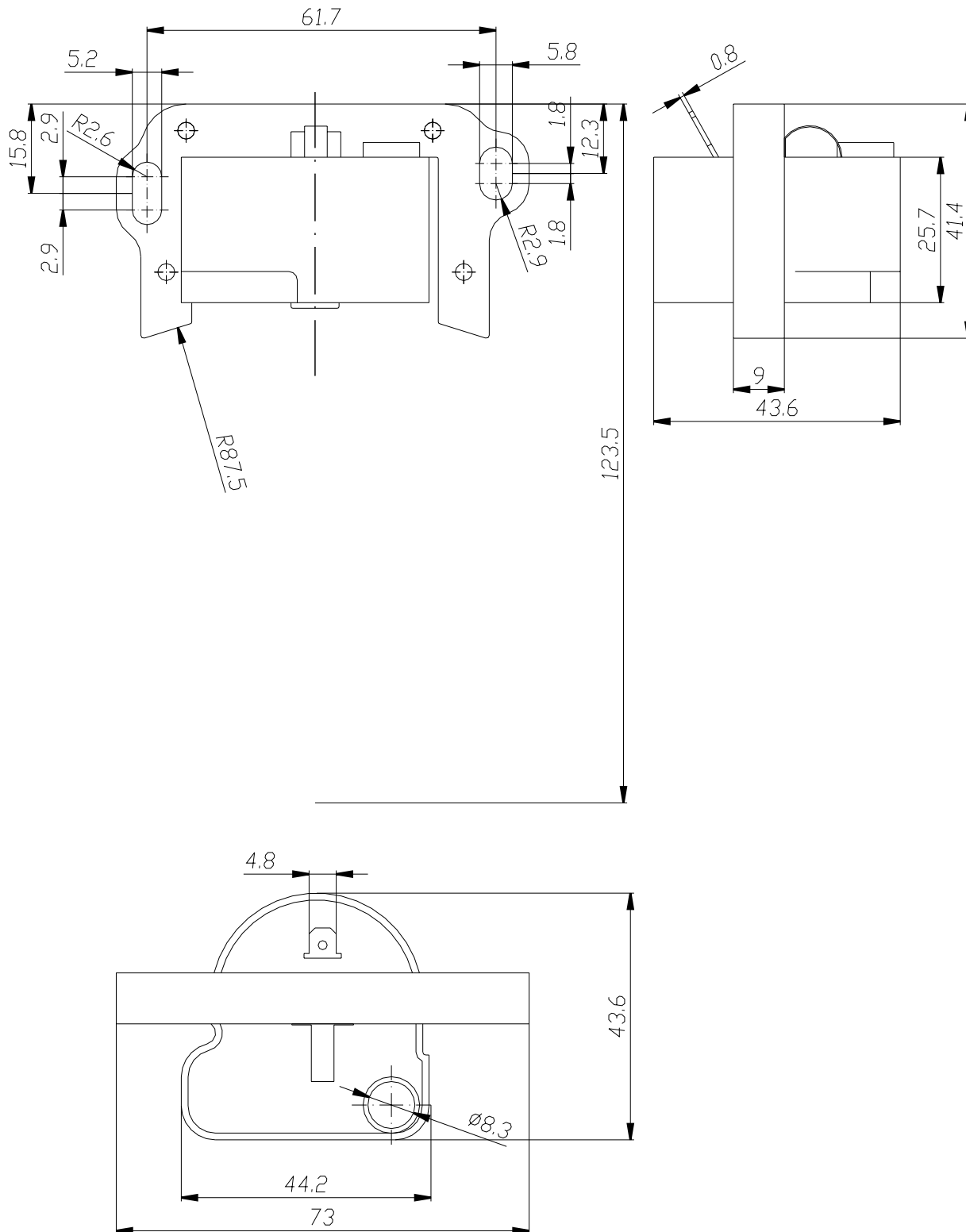
Refer to the package specification page at the end of this catalogue. The electronic ignition module comes in a blister package (see sketch S1) along with a high voltage cable and an ignition breaker cable. Larger quantities of the ATV-1 module come in appropriately sized cartons (see sketches S2, S3, and S4).

WARRANTY

All products supplied by VEC Ignitions are covered by a five-year warranty. This warranty does not cover damages resulting from improper installation and damages caused by mechanical actions.



TECHNICAL DRAWING
 TYPE ATV-1



TECHNICAL DATA

In connection with the HVZ-647 ignition coil the following specifications apply:

- * Secondary coil voltage more than 15 kV
- * Very rapid build-up of secondary voltage
- * Start-up revolution speed 900 rpm
- * Maximum revolution speed 15,000 rpm
- * Operational temperature range between -20°C and +60°C
- * Storage temperature range between -40°C and +100°C



TYPE SV-647

chain saw



GENERAL INFORMATION



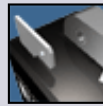
The SV-647 electronic ignition component is connected with the ignition coil to achieve fuel ignition. This type of ignition module utilises thyristor switches for magnet activation. The modules are fabricated to high standards at VEC's own modern production facility. VEC uses only high-quality components from globally established suppliers. It all adds up to a long lifetime and reliable operation.

The SV-647 module is specified for installation in these chain saw models manufactured by SOLO:
647, 657.

WARRANTY

All products supplied by VEC Ignitions are covered by a five-year warranty. This warranty does not cover damages resulting from improper installation and damages caused by mechanical actions.

ORDERING



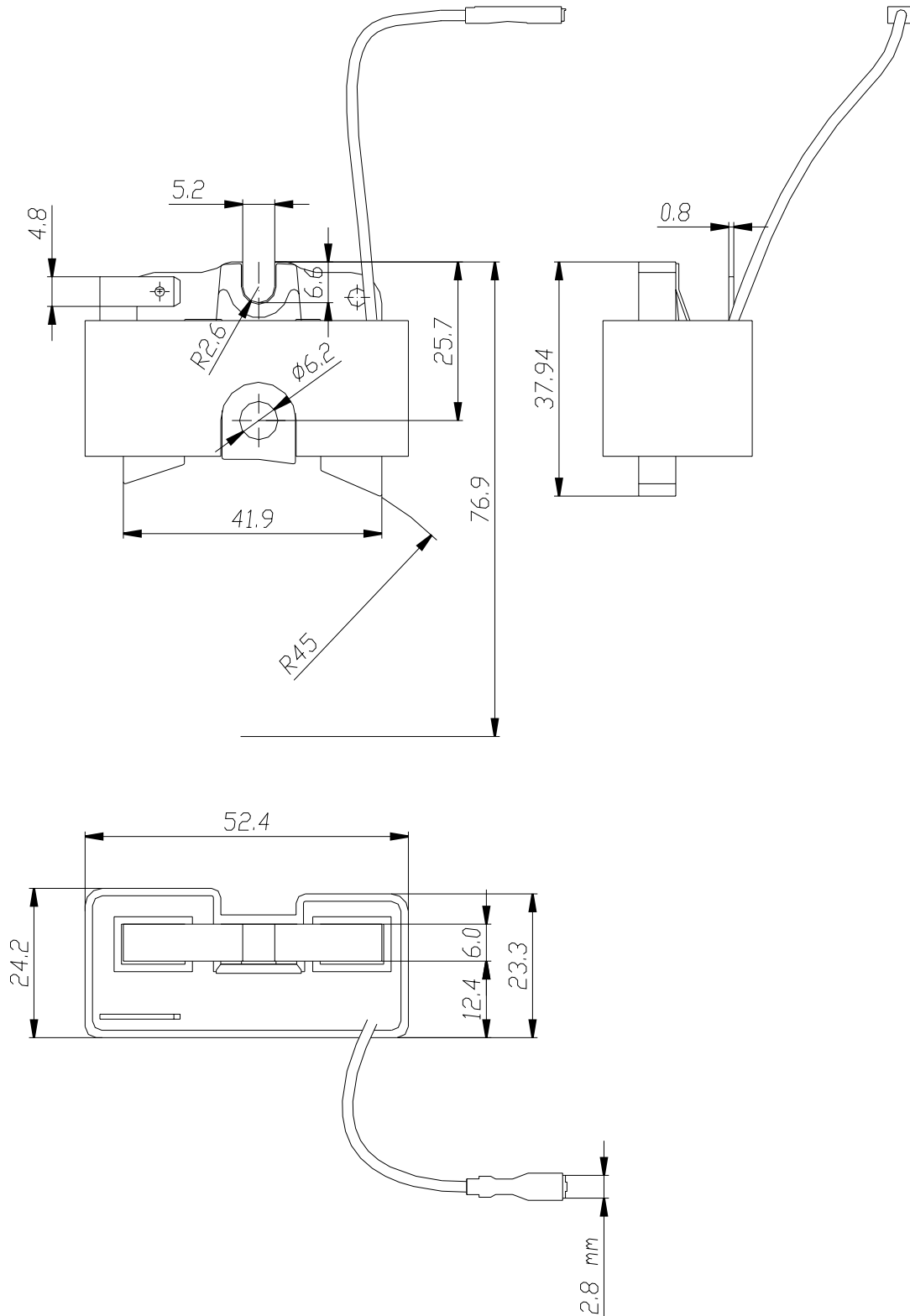
When ordering an ignition module or component, make sure to specify the correct model designation, in this case SV-647. Please let us know if you intend to operate the modules under extreme temperature conditions. We have special solutions for these cases.

PACKAGING



Refer to the package specification page at the end of this catalogue. The electronic ignition module comes in a blister package (see sketch S1) along with the HVZ-647 ignition coil, a high voltage cable and the ignition breaker- and discharge cables already installed. Larger quantities of the SV-647 module come in appropriately sized cartons (see sketches S2, S3, and S4).

TECHNICAL DRAWING TYPE SV-647



TECHNICAL DATA



TYPE DMV-100

lawn mower
 water pump
 powered turf digger



- * Secondary coil voltage more than 17 kV
- * Very rapid build-up of secondary voltage
- * Start-up revolution speed 500 rpm
- * Maximum revolution speed 15,000 rpm
- * Operational temperature range between -20°C and +60°C
- * Storage temperature range between -40°C and +100°C

GENERAL INFORMATION



The DMV-100 electronic ignition module is designed to achieve contact-free ignition of air-fuel mixtures. This type of ignition module utilises

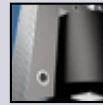
transistor switches for magnet activation. A key feature of this module is the very low revolution speed for start-up, which translates into an easy engine start. The modules are fabricated to high standards at VEC's own modern production facility. VEC uses only high-quality components from globally established suppliers. It all adds up to a long lifetime and reliable operation.

The DMV-100 module is specified for installation in the 1DM60 powered turf digger manufactured by DMB:
 SP-250 / 2.5 SLAP-500

WARRANTY

All products supplied by VEC Ignitions are covered by a five-year warranty. This warranty does not cover damages resulting from improper installation and damages caused by mechanical actions.

ORDERING



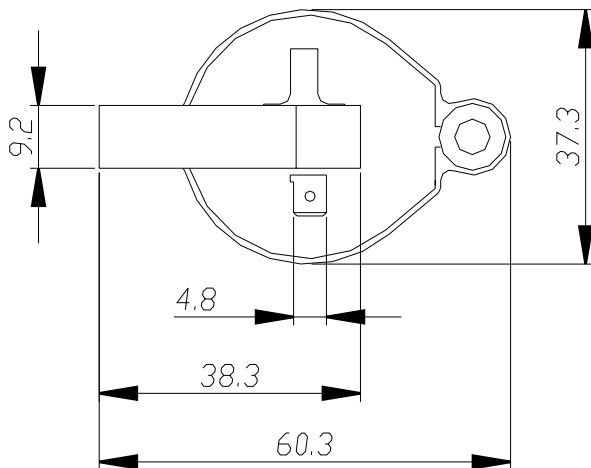
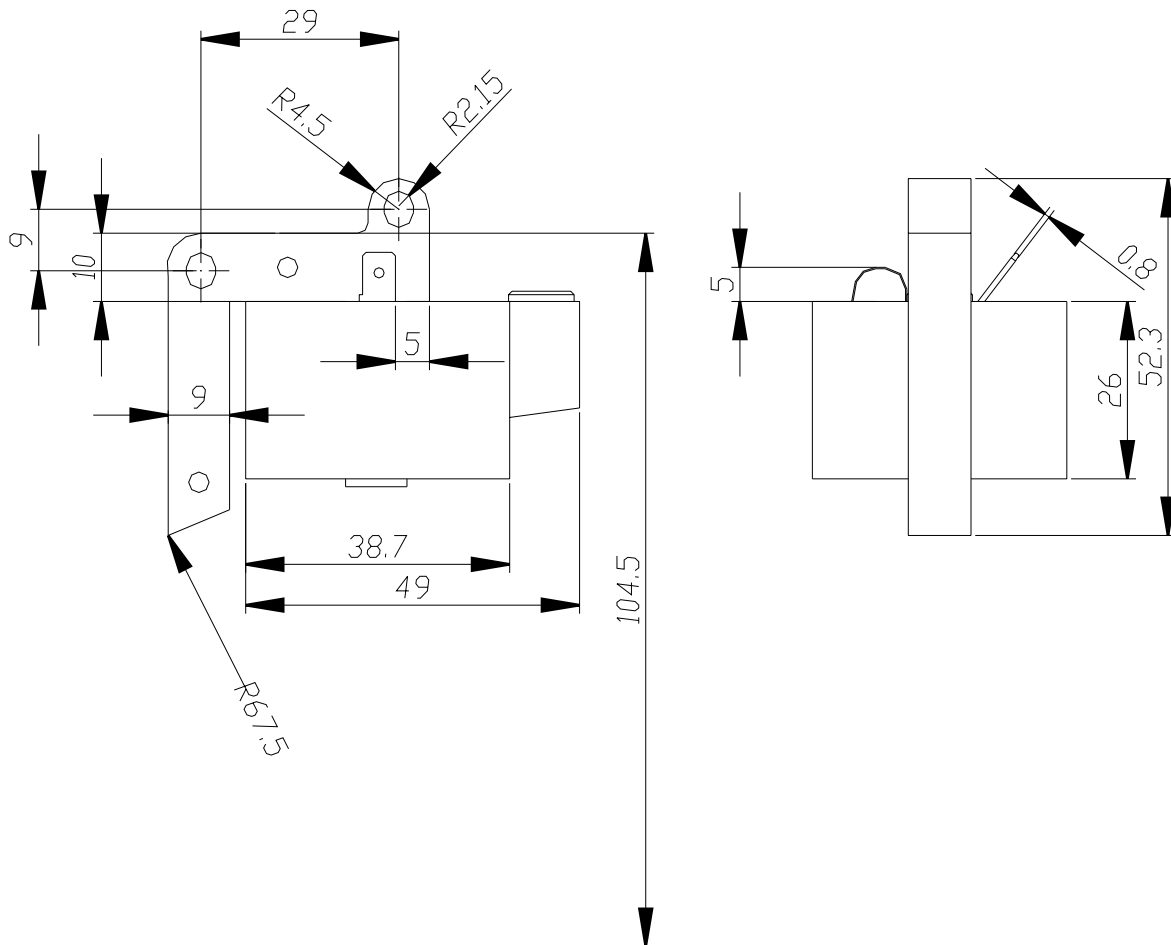
When ordering an ignition module or component, make sure to specify the correct model designation, in this case DMV-100. Please let us know if you intend to operate the modules under extreme temperature conditions. We have special solutions for these cases.

PACKAGING



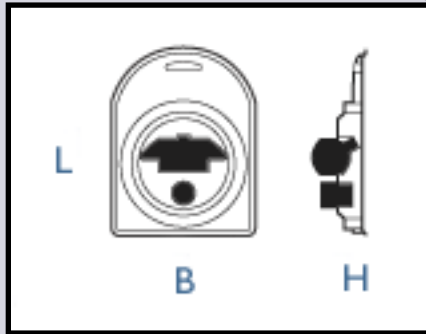
Refer to the package specification page at the end of this catalogue. The electronic ignition module comes in a blister package (see sketch S1) along with a high voltage cable and an ignition breaker cable. Larger quantities of the DMV-100 module come in appropriately sized cartons (see sketches S2, S3, and S4).

TECHNICAL DRAWING
TYPE DMV-100



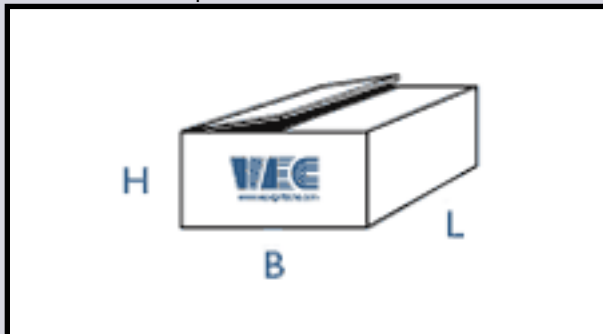
PACKAGING

Sketch S1 Single-piece blister package



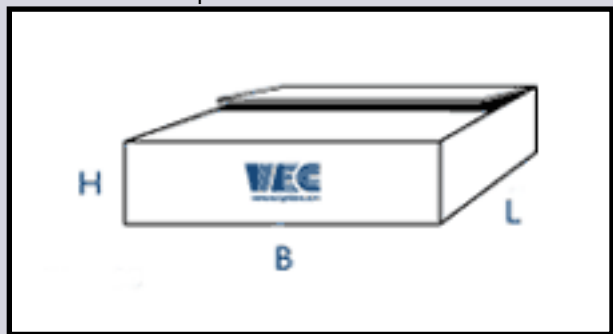
Length	Width	Height
16,3	12,8	5

Sketch S2
10-pieces cardboard box



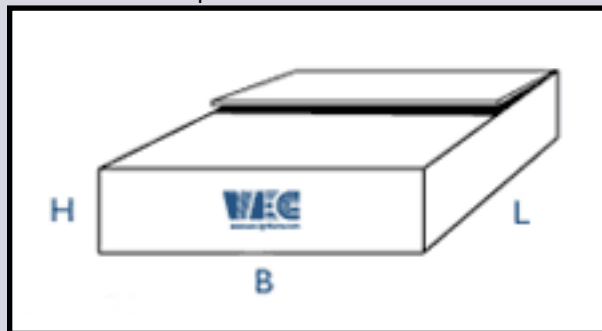
Length	Width	Height
34	25	13

Sketch S3
20-pieces cardboard box



Length	Width	Height
34	50	13

Sketch S4
30-pieces cardboard box



Length	Width	Height
50	50	13

CONTACT FORM

Name:

Address:

City:

Zip:

Continent:

Country:

State:

Phone:

Fax:

Email:

Website:

Comments:



ORDER FORM

Sender / Stamp

Customer number :

--	--	--	--	--	--	--	--	--	--

Date:

--	--	--	--	--	--	--	--	--	--

Telephone - and Fax number

QUANTITY	MODEL	DESCRIPTION	PRICE	TOTAL PRICE
				TOTAL

TOTAL

Signature

VEC d.o.o. ■
Suboticka b.b. ■
78 000 Banja Luka ■
Bosnia and Herzegovina - EU ■

■ tel: +387 51 381 090
■ fax: +387 51 381 035
■ e-mail: info@vecignitions.com
■ www.vecignitions.com